

DAVID Y. IGE  
GOVERNOR



STATE OF HAWAII  
DEPARTMENT OF TRANSPORTATION  
869 PUNCHBOWL STREET  
HONOLULU, HAWAII 96813-5097

JADE T. BUTAY  
DIRECTOR

Deputy Directors  
ROSS M. HIGASHI  
EDUARDO P. MANGLALLAN  
EDWIN H. SNIFFEN

IN REPLY REFER TO:

Board of Land and  
Natural Resources  
State of Hawai'i  
Honolulu, Hawai'i

ISSUANCE OF A REVOCABLE PERMIT FOR PAVED, IMPROVED LAND FOR  
THE STORAGE AND PARKING OF A CONTAINER TRUCK AND A FUEL TRUCK  
CONSTRUCTION HELICOPTERS, INC. DBA CHI AVIATION  
KALAELOA AIRPORT  
TAX MAP KEY: (1) 9-1-13: PORTION OF 32

O'AHU

REQUEST:

Issuance of a Revocable Permit for Paved, Improved Land to Construction Helicopters,  
Inc. dba CHI Aviation, situated at Kalaeloa Airport.

LEGAL REFERENCE:

Section 171-55, Hawai'i Revised Statutes (HRS).

APPLICANT:

Construction Helicopters, Inc. dba CHI Aviation, whose mailing address is 3679 Bowen  
Road, Howell, Michigan 48855.

LOCATION AND TAX MAP KEY:

A portion of Kalaeloa Airport, Kapolei, Island of O'ahu, State of Hawai'i, identified by  
Tax Map Key: 1<sup>st</sup> Division, 9-1-13: portion of 32

AREA:

Area/Space No. 001-130, containing an area of approximately 1,600 square feet, as  
shown and delineated on the attached map labeled Exhibit "A".

ZONING:

State Land Use District: Urban  
City and County of Honolulu LUO: P-2 (To be rezoned in the future)

**ITEM M-1**

BLNR – ISSUANCE OF A REVOCABLE PERMIT FOR PAVED, IMPROVED LAND FOR THE STORAGE AND PARKING OF A CONTAINER TRUCK AND A FUEL TRUCK CONSTRUCTION HELICOPTERS, INC. DBA CHI AVIATION  
Page 2

LAND TITLE STATUS:

Non-ceded - Section 5(a) lands of the Hawai'i Admission Act  
DHHL 30% entitlement lands pursuant to Hawai'i Admission Act YES \_\_\_ NO X

CURRENT USE STATUS:

Land presently encumbered by Governor's Executive Order No. 3861, setting aside Kalaeloa Airport under the control and management of the Department of Transportation, Airports Division (DOTA), State of Hawai'i, for Airport Purposes.

CHARACTER OF USE:

The space will be used for the storage and parking of a container truck and a fuel truck for supplies and equipment for a heavy-lift helicopter operations company as part of the contract for HECO's electric grid system on Oahu.

COMMENCEMENT DATE:

To be determined by the Director of Transportation at a later date.

MONTHLY RENTAL:

\$1,666.67 (as determined from the DOTA schedule of rates and charges established by appraisal of Airports property statewide).

SECURITY DEPOSIT:

\$5,000.01, or three (3) times the monthly rental in effect.

CHAPTER 343, HRS - ENVIRONMENTAL ASSESSMENT:

The subject land area is covered by the Final Environmental Assessment for the Kalaeloa Airfield Development Plan Improvements, State Project No. AO5011-02 dated June 2010. This Environmental Assessment was prepared by Wilson Okamoto Corp. for the State of Hawai'i, Department of Transportation, Airports Division, in part to evaluate the environmental effects of the recommended Kalaeloa Airfield Master Plan to meet existing and forecast general aviation demands.

REMARKS:

The issuance of a Revocable Permit for paved, improved land to Construction Helicopters, Inc. dba CHI Aviation for the storage and parking of a container truck and a fuel truck at Kalaeloa Airport complies with Chapter 343, Exemption Class 1.D.10 as a continuing aeronautical use, and is in accordance with Section 171-55 HRS, relating to Permits.

RECOMMENDATION:

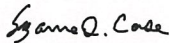
That the Board authorize the Department of Transportation to issue a month-to-month Revocable Permit to Construction Helicopters, Inc. dba CHI Aviation, subject to:  
(1) terms and conditions herein outlined, which are by reference incorporated herein; and  
(2) such additional terms and conditions as may be prescribed by the Director of Transportation to best serve the interests of the State.

Respectfully submitted,

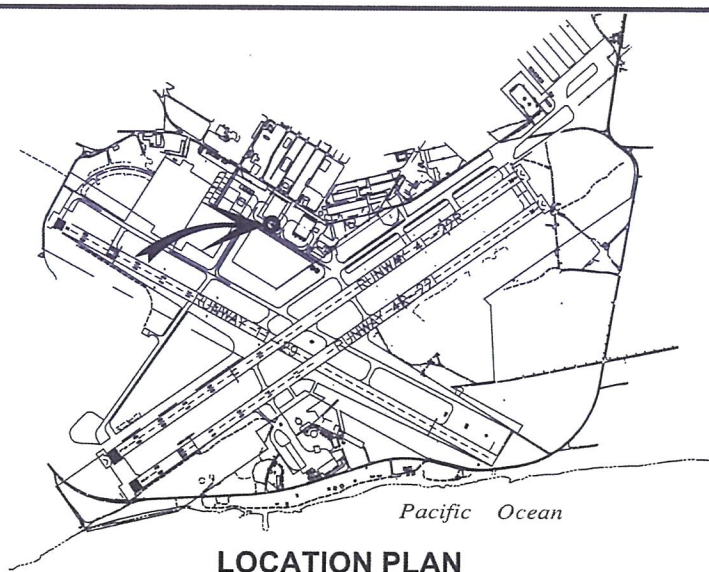


JADE T. BUTAY  
Director of Transportation

APPROVED FOR SUBMITTAL:

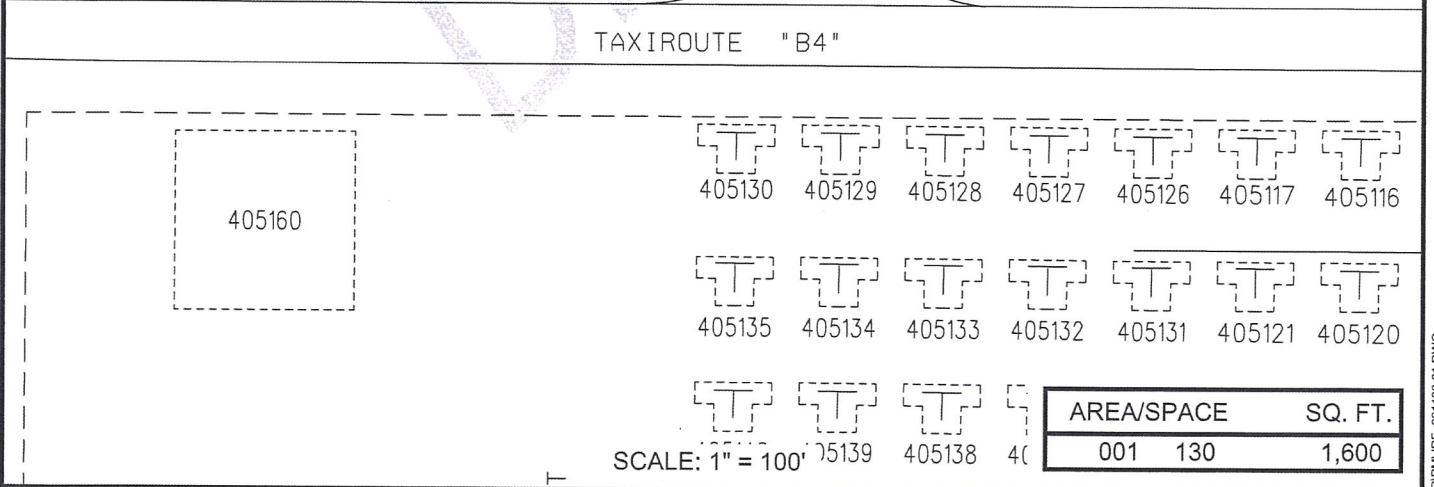
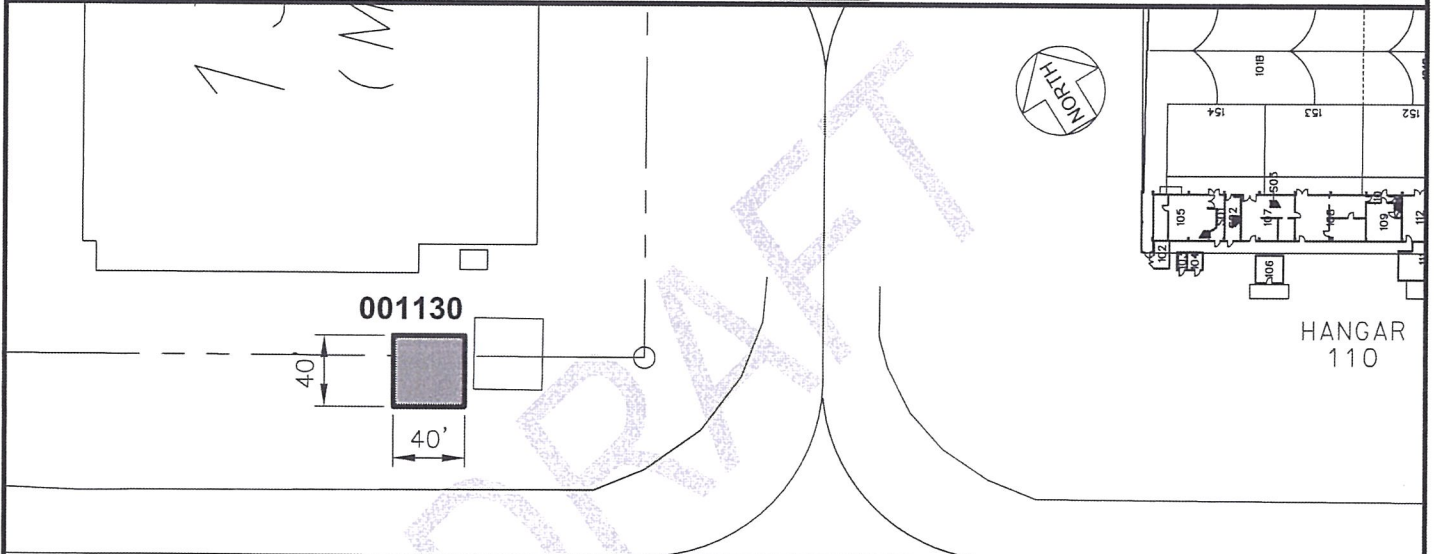


SUZANNE D. CASE  
Chairperson and Member



3000:1

**LOCATION PLAN**



SCALE: 1" = 100'

RP-9264

DATE : MAY 2022

EXHIBIT: **A**



Airports Division

CONSTRUCTION  
HELICOPTERS, INC.

LOT

001130

**KALAELOA AIRPORT**