



Welcome!

Community Wildfire Protection Planning Workshop for East Honolulu

August 16, 2022 12pm and 5:30pm

Project led and coordinated by:

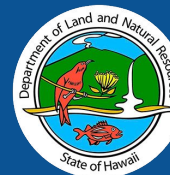


Funded by:



US Forest Service Grant
Fire & Aviation Management- Cooperative Fire
No. 20-DG-11052012-136

In partnership with:



Housekeeping



Audio & Video: Please keep your microphone muted during the presentation. And your video can stay on or off.



Questions: You may type questions during the presentation into the Chat Box. There will also be an opportunity to ask questions verbally at the end of the presentation.



Chat Box is for respectful discussion and will be seen by everyone.



Captions are available by using the “CC” button your menu. You may also enable the full live transcript or hide captions from this menu.

Who is Hawaii Wildfire Management Organization?

Vision:

For Hawaii's people and places to be wildfire-ready and wildfire-resilient



- 501(c)3 nonprofit organization, formed 2000
- Hub of collaborative, proactive, community/partner-driven wildfire projects in Hawaii
- With DOFAW, coordinate the Firewise USA- Hawaii program



hawaiiwildfire.org



Introductions

- Moderators and panelists
- Special guests
- Attendees (You!)
 1. Please rename yourself (top right of Zoom selfie, click the “...”)
 2. Use the chat to share where you are Zooming in from and who you recognize as the stewards of that land
 3. Respond to the Zoom poll (2 questions)

Why we are here

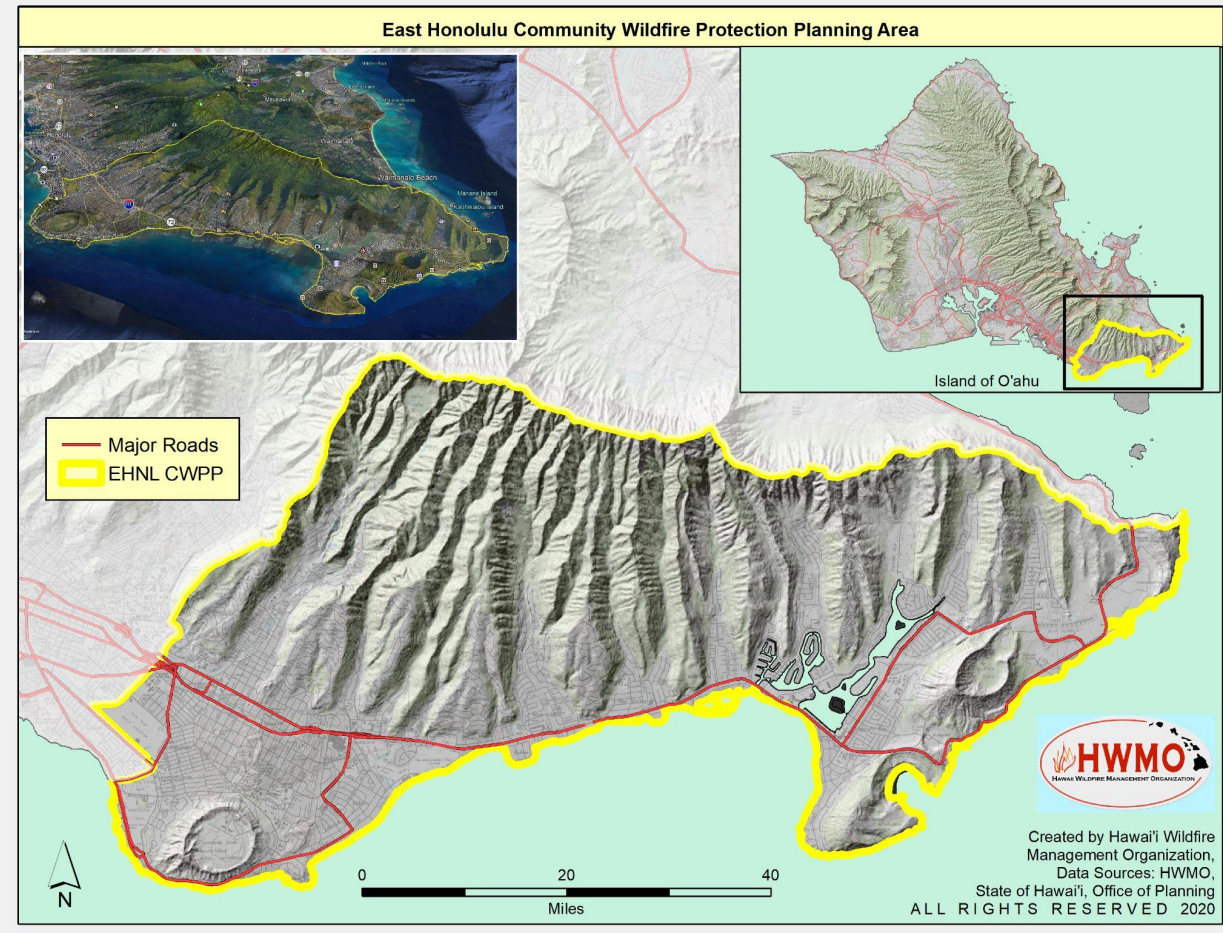
What we hope to achieve today

1. Provide awareness about the wildfire situation in Hawai'i and what that means for the East Honolulu region (presentation)
2. Generate a list of your wildfire concerns and next-step actions for East Honolulu for use by all (small break-out sessions)
3. Make connections



East Honolulu CWPP Planning Boundaries

- Hawai'i Kai
- Kuliouou-Kalani Iki
- Waialae-Kahala
- Kaimuki
- Diamond Head/ Kapahulu/
St. Louis Heights





Why make a Community Wildfire Protection Plan?



Protect what you love

**Protect what we all need
special**

Protect what is



Why make a Community Wildfire Protection Plan?

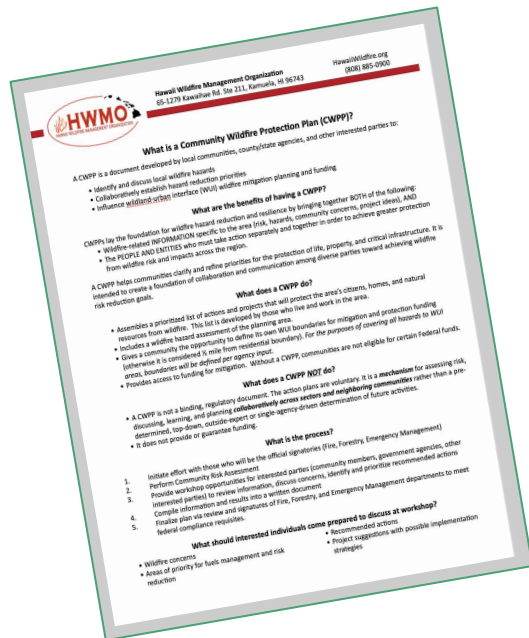


Establish shared goals & priorities

Catalyze action

Leverage partnerships & funding

What is and isn't a CWPP?



Community Wildfire Protection Plans (CWPP):

- MECHANISM for learning, sharing, prioritizing, and taking action together
- Builds culture of collaboration
- Opens doors for funding
- Creates a list of next-step actions and priorities
- Provides a hazard assessment for the area
- Are a non-binding, non-enforceable, volunteer-only
- Shift culture around wildfire readiness to one of action by all

A CWPP plan is most useful when...

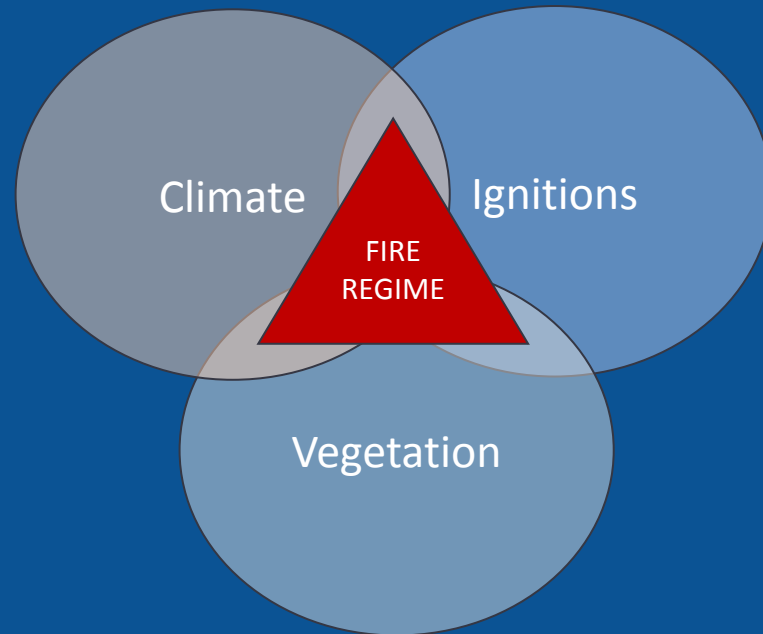




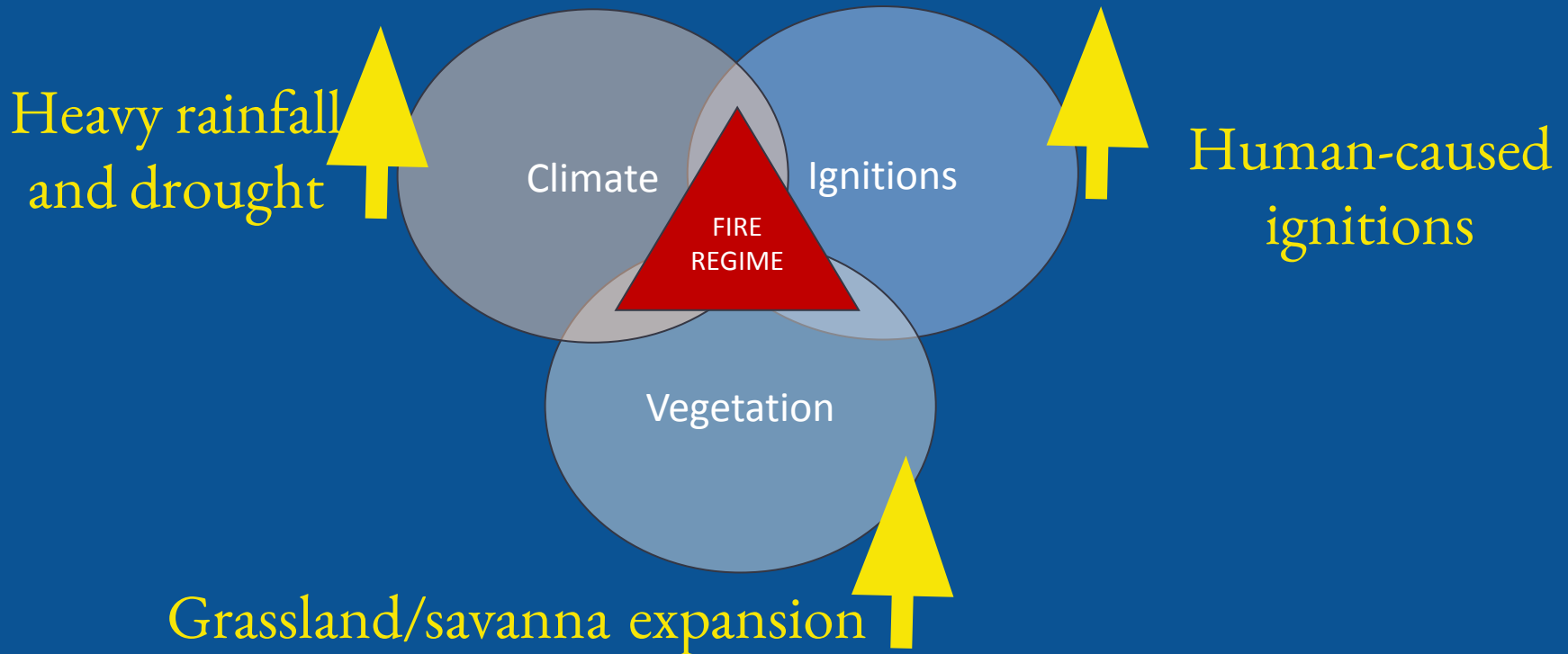
Some context:

Wildfire in Hawaii and in East Honolulu Area

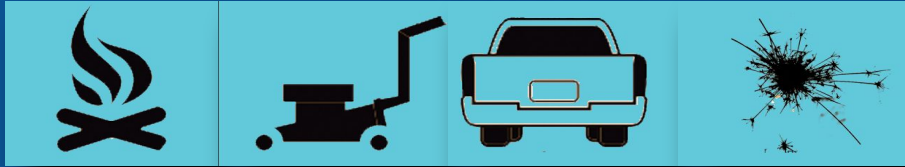
Why are wildfires increasing in Hawaii and the Pacific?



Why are wildfires increasing in Hawaii and the Pacific?

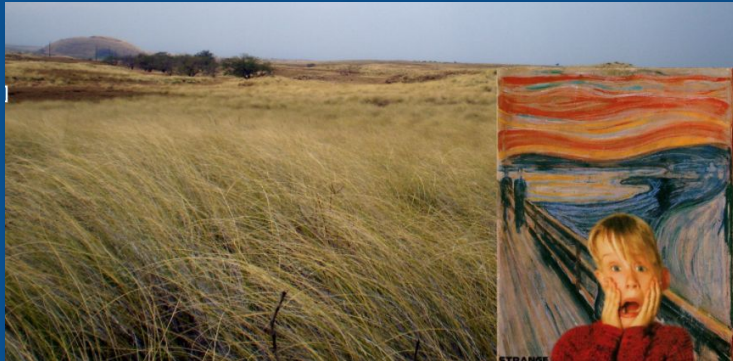


Accidental ignitions (75%) are top cause:
campfires, equipment, vehicles,
fireworks



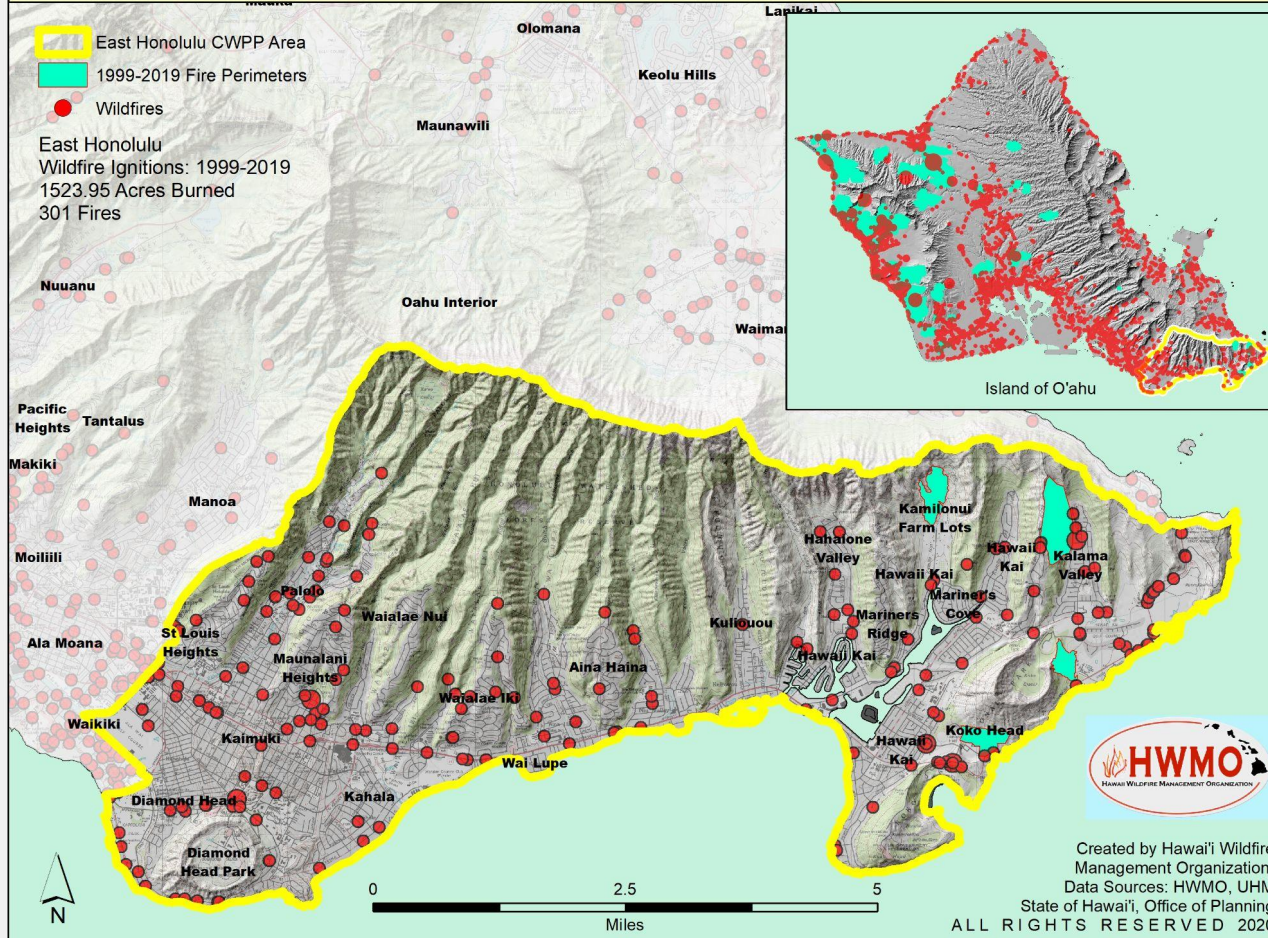
Outreach
Education
Risk Reduction

26%+ of the state (1 million acres) has been
invaded by nonnative, fire-prone grasses &

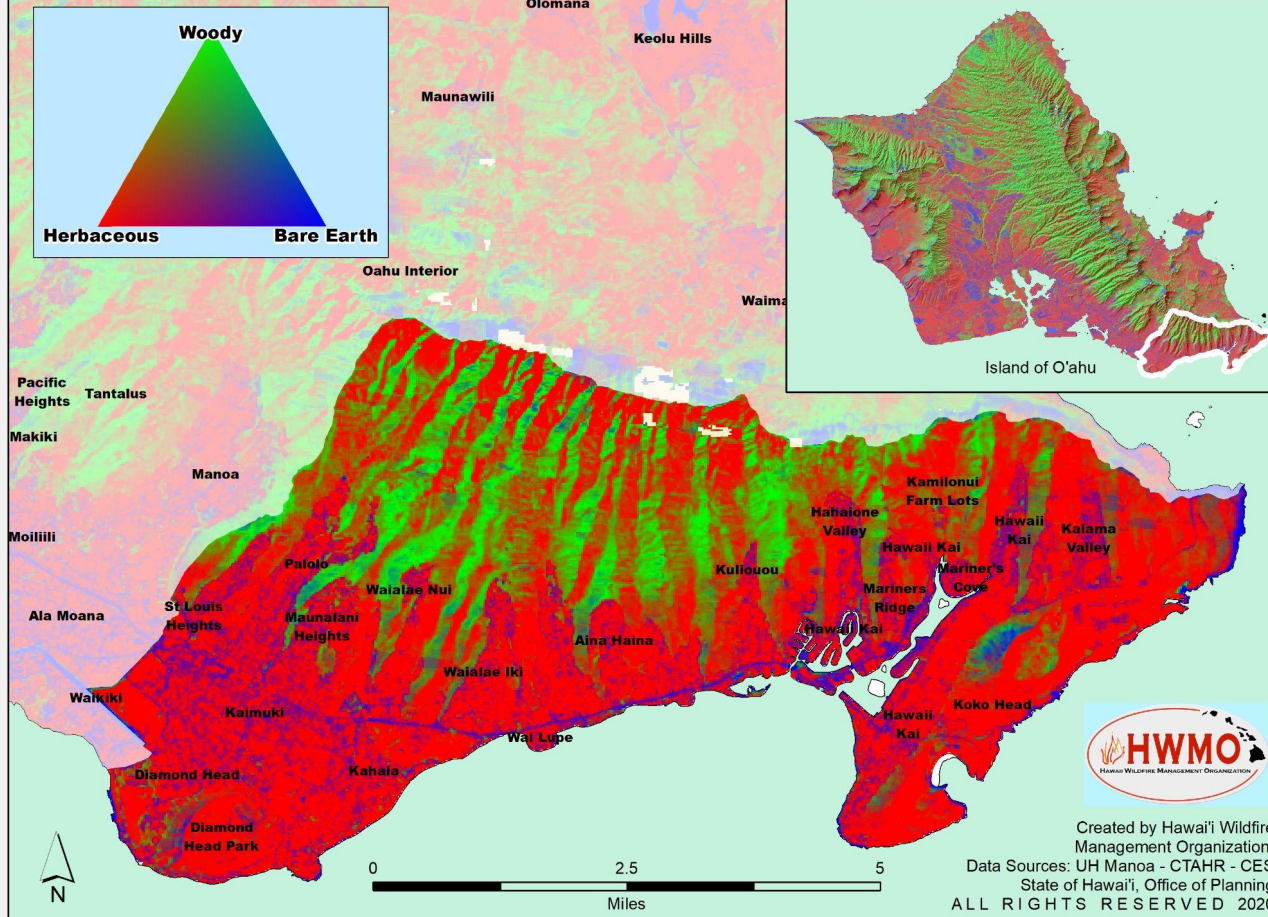


Fuels
Management
Cross-Boundary
Coordination

East Honolulu CWPP: Fire Environment - Wildfire Incidents

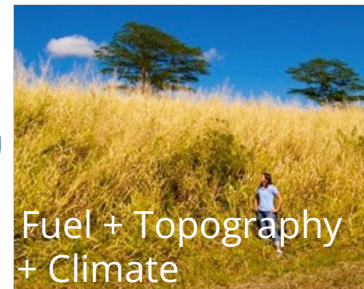


East Honolulu CWPP: Fire Environment - Fuel Type - Fractional Landcover





Thinking through causes and impacts of wildfire

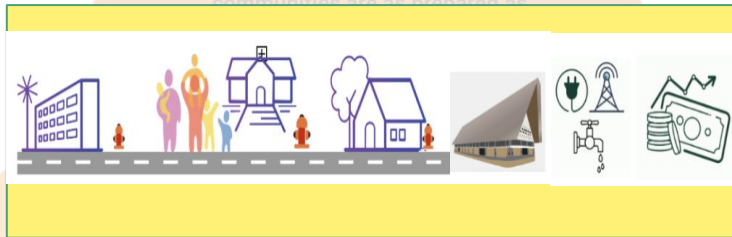


National Cohesive Wildland Fire Management Strategy



Wildfire Planning Framework

People and Communities



SCIENCE



Land and Water

boundaries, are resilient
to fire, insect and
disease disturbances

Safe,
Effective



Firefighting



Goal for people and communities to be as prepared as possible to prevent, respond to, and recover from wildfire.



- Protecting homes, communities, historic & cultural sites, gathering places, municipal infrastructure, and economic interests from wildfire impacts.
- Raising community awareness of wildfire impacts and the actions they should take.
- Reducing problematic human-caused fires.
- Ensuring everyone knows they play a role in prevention and safety.
- Building knowledge and capacity for all to be part of the solution.



People and Communities



Laws, policies, budgets, planning, regulations, elected official support



Public and K-12 Outreach



Fire mitigation workshops for residents and homeowners



Home fire safety assessments





People and Communities

Outreach



Wildfire LOOKOUT!

- Wildfires are a frequent and significant hazard across Hawaii.
- Wildfires impact drinking water, coral reefs, fisheries, recreation, traffic, native forests, and human lives, homes, safety, and health! These are under publicized and need attention. Spread the word!
- Mostly, all wildfires are started by people.
- Taking a simple steps around your home, yard, and community can protect you and your family.

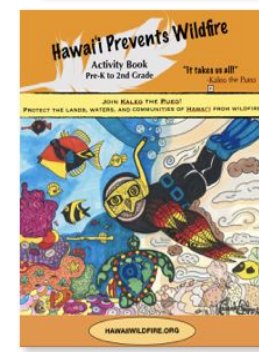
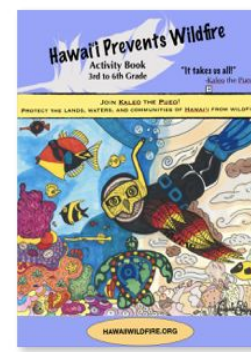
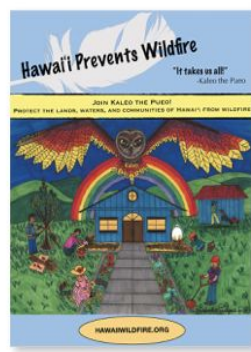
HELP DO YOUR PART BY PREVENTING WILDFIRE

- Clear vegetation 10 feet around campfires and BBQs, keep a shovel and water nearby, and put them out COLD before walking away.
- Be sure machinery (chainsaws, weed trimmers) and recreational vehicles have operating spark arrestors and are maintained regularly.
- Head from vehicle exhaust systems can ignite dry grass - park cars on areas that are paved or where vegetation is trimmed and cleared.
- Fireworks are a common cause of burn injuries in dry, grassy areas - attend and enjoy public fireworks displays to maximize safety and fire protection.

Avoid these activities when it's windy or grass and brush are dry!

This message brought to you by:

Created by Hawaii Wildfire Management Organization in partnership with Hawaii Department of Land and Natural Resources and Hawaii Department of Fire and Emergency Services.

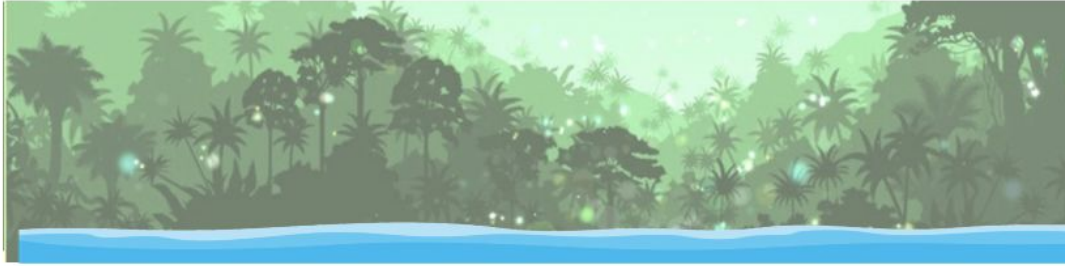




People and Communities

Community Training & Action Programs





Land and Water

Goal is for land and water to be resilient to fire, insect, and disease disturbances.

This topic of conversation focuses on:



- Protecting or restoring landscape health and function, water quantity and quality, habitats, biodiversity, etc. from wildfire impacts.
- Reducing risk of fire to the landscape.
- Managing pre-fire hazards, like overgrown weeds and unmanaged grasses.
- Protecting sensitive natural resources and sensitive areas.
- Preventing or treating post-fire impacts.



Land and Water



Fuels management



Restoration, outplanting



Volunteer workdays for weed removal

Fencing





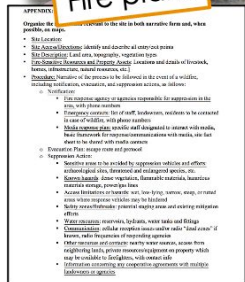
Firefighting

Goal for firefighting is for all partners and agencies to participate in making and implementing safe, effective wildfire response.

This topic of conversation focuses on:



- Preventing injuries and loss of life for the public and firefighters.
- Developing adequate firefighting infrastructure and capacity: water, access, equipment, training.
- Ensuring multi partner planning and coordination among partners, agencies, and community.



Wildfire Planning Framework Review

Fire Adapted Communities People and Communities



SCIENCE



Land and Water

boundaries, are resilient
to fire, insect and
disease disturbances

Safe, Effective



Firefighting

and implementing safe,
effective and risk-based
management decisions



**And now for the small group breakout
discussions!**





Now it is your turn!

BREAKOUT
GROUPS!

We will break everyone into 3 smaller groups

One 12-minute conversation per category:

- Land and Water (Melissa)
- People and Communities (Elizabeth/Heather)
- Firefighting (Clay)

Small Breakout Group Activities

Step One

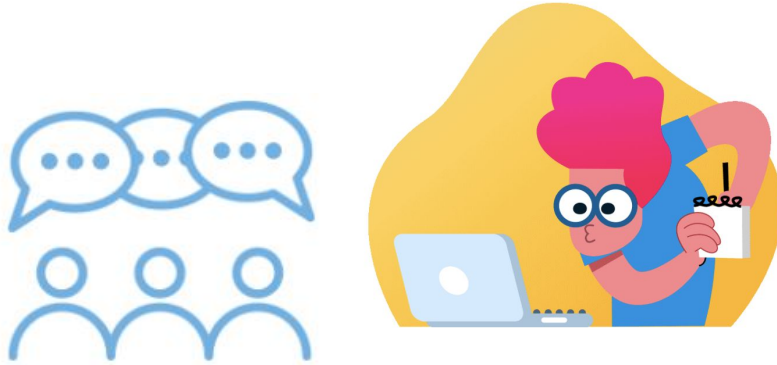
We will break you into 3 small discussion groups
and put you each in breakout rooms.



Small Breakout Group Activities

Step Two

A new facilitator will come to your group every 10 minutes (3 times).



After the 3 discussions, stay put! You will be brought back to the main room to complete the workshop!

Quick reminder

Categories to be discussed:

People, Communities, and the Built Environment



Land and Water



Firefighting

Discussion Format

Topic 1: People and Communities

(use black marker)

Wildfire-Related Concerns

Recommended Actions

Focal Category

10 Minutes Per Topic:

Work with your group to come up with concise concerns and recommendations

Use this format:

One wildfire-related concern is

My recommended action is

Discussion Format

Topic 1: People and Communities (use black marker)

Wildfire-Related Concerns

Recommended Actions

Lack of community
knowledge of
wildfire

Quickly state a
concern

Notice what topic you
are discussing

Discussion Format

Topic 1: People and Communities (use black marker)

Wildfire-Related Concerns

Lack of community knowledge of wildfire

Recommended Actions

1. Signs in towns and communities
2. Radio announcements
3. School programs

Quickly state a concern

Notice what topic you are discussing

Generate a list of actions, solutions, and projects

Small Breakout Group Activities

Repeat until you run out of time!

Move on to next concern

Topic 1: People and Communities

(use black marker)

Wildfire-Related Concerns

Lack of community knowledge of wildfire

Historic sites and electrical infrastructure aren't yet protected from wildfire

Recommended Actions

1. Signs in towns and communities
2. Radio announcements
3. School programs

1. Coordinate among partners to make plans
2. Clear dry vegetation around all sites
3. Put up prevention signs

Generate **another** list of actions, solutions, and projects

Small Breakout Group Activities



After 10-12 minutes, new facilitator arrives to discuss next category

Quick briefing on previous group's input and then you can add to it

Topic 2: Land and Water

(use green marker)

Wildfire-Related Concerns

Unmanaged grasses

Recommended Actions

1. Coordinate among landowners to make fuelbreaks
2. Clear dry vegetation around perimeters of large lands
3. Plant other species

New Category (3 total)

Same Format

Ground Rules & Content Goals

1. This is a idea-generating activity, not a debate. The goal is to capture as much as possible, so just state your ideas and let others state theirs, and move on.
2. We really want to hear from everyone. Please do step up and share, and also step back as needed to let others share.
3. Go as broad or specific as you want.
4. State the concerns part concisely. We are looking for ***solutions and next steps*** and want to spend the group's time making that list.
5. Have fun! Get to know each other. We're in this together!

Small Breakout Group Activities

Here we go!

Hold tight and in just a minute you will be in your breakout room.
Please stay on after the last group, as we will wrap up back in the large group together!





Next Steps and Resources



Now what?

- **HWMO** will complete the Community Wildfire Protection Plan document in consultation with HFD, DOFAW, and Emergency Management
- **You** can become more wildfire-prepared by reducing hazards around you home and yard and working on a family emergency plan right away. Remember there is a lot of information available to help!



hawaiiwildfire.org

Firewise USA® Program



FIREWISE USA®
RESIDENTS REDUCING WILDFIRE RISKS

- National voluntary program hosted by a global nonprofit, National Fire Protection Association (NFPA), started in 2002
- Provides framework to help neighbors:
 - Get organized
 - Find direction
 - Take action to mitigate wildfire threats around their homes and community
- Provides recognition to communities that meet established criteria
- 1700+ sites across the country
- **HWMO supports the network of Firewise-recognized communities in Hawai'i**

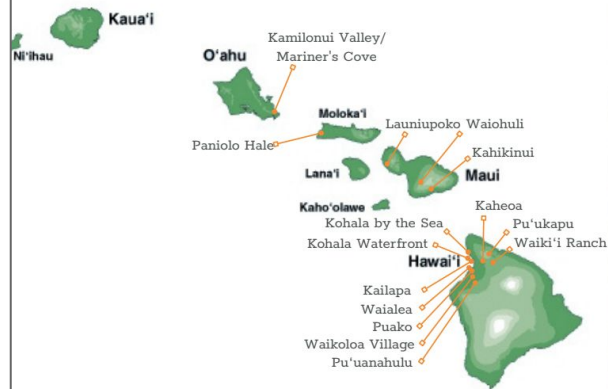


Firewise USA® Program



**HAWAII
FIREWISE**

**2021 At a
Glance**



ACROSS HAWAII

BY THE NUMBERS

AS REPORTED TO THE NATIONAL FIRE PROTECTION ASSOCIATION (NFPA) BY RESIDENTIAL LEADERS



15 Firewise USA® communities

*1 renewal pending



66 Residential Leaders



71,577 Residents Engaged*



5,037 Homes Impacted*



**2,336 Cubic Yards Hazardous Fuels
Removed****



11,286 Hours Volunteered**



\$854,860 Dollars Invested***

*as a resident of a Firewise-recognized community

**reported numbers only

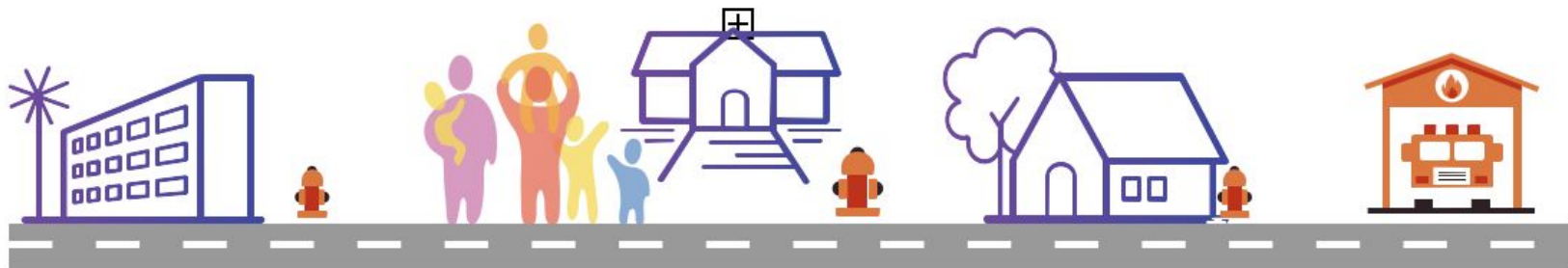
***reported numbers only, includes both volunteer and cash investments

To join your community's Firewise efforts (Kamilonui Valley/Mariner's Cove), or to learn more about your community becoming Firewise recognized, email Nani at nani@hawaiiwildfire.org

Follow up survey
and input
opportunity!



There is greater protection for the **community** when
everyone participates **proactively**.



Thank you for being part of the SOLUTION!



Contact us any time:

directors@hawaiiwildfire.org

(808) 885-0900

hawaiiwildfire.org