

DAVID Y. IGE  
GOVERNOR



STATE OF HAWAII  
DEPARTMENT OF TRANSPORTATION  
869 PUNCHBOWL STREET  
HONOLULU, HAWAII 96813-5097

JADE T. BUTAY  
DIRECTOR  
  
Deputy Directors  
ROSS M. HIGASHI  
EDUARDO P. MANGLALLAN  
EDWIN H. SNIFFEN

IN REPLY REFER TO:

Board of Land and  
Natural Resources  
State of Hawai'i  
Honolulu, Hawai'i

ISSUANCE OF A REVOCABLE PERMIT FOR AIRCRAFT PARKING  
FREDERICK PERKO AND SANDRA MAYVILLE  
ELLISON ONIZUKA KONA INTERNATIONAL AIRPORT AT KEĀHOLE  
TAX MAP KEY: (3) 7-3-43: PORTION OF 003 HAWAI'I

REQUEST:

Issuance of a Revocable Permit for Aircraft Parking (Parking Permit) to Frederick Perko and Sandra Mayville, for aircraft tie-down space, situated at Ellison Onizuka Kona International Airport at Keāhole.

LEGAL REFERENCE:

Section 171-55, Hawai'i Revised Statutes (HRS).

APPLICANTS:

Frederick Perko and Sandra Mayville, whose mailing address is P.O. Box 6272, Ocean View, Hawai'i 96737.

LOCATIONS AND TAX MAP KEY:

Portion of Ellison Onizuka Kona International Airport at Keāhole (KOA), Kailua-Kona, Island of Hawai'i, identified by Tax Map Key: 3rd Division, 7-3-43: Portion of 003.

AREA:

Area/Space No. 425-108, containing an area of approximately 1,659 square feet, as shown and delineated on the attached Exhibit A.

**ITEM M-11**

BLNR – ISSUANCE OF A REVOCABLE PERMIT FOR AIRCRAFT PARKING  
FREDERICK PERKO AND SANDRA MAYVILLE

Page 2

ZONING:

State Land Use District:	Urban & Conservation
County of Hawai'i:	Industrial (MG-1a) and Open

LAND TITLE STATUS:

Section 5(a) lands of the Hawai'i Admission Act: Ceded  
DHHL 30% entitlement lands pursuant to Hawai'i Admission Act YES\_\_\_ NO X

CURRENT USE STATUS:

Land presently encumbered by Governor's Executive Order No. 3074, dated August 20, 1981, setting aside 4,204.10 acres designated as KOA under the control and management of the State of Hawai'i, Department of Transportation, Airports Division for Airport Purposes.

CHARACTER OF USE:

Aircraft tie-down space (1967 Cessna 150G, Tail No. N-3734J).

COMMENCEMENT DATE:

Upon complete execution of the parking permit.

MONTHLY RENTAL:

\$126.00 (as determined from the Department of Transportation, Airports Division schedule of rates and charges established by appraisal of Airports property statewide)

SECURITY DEPOSIT:

\$378.00, or three (3) times the monthly rental in effect.

CHAPTER 343, HRS – ENVIRONMENTAL ASSESSMENT:

The State of Hawai'i, Department of Transportation, Airports Division, has determined the subject land areas are covered by the Final Environmental Assessment (EA)/Finding of No Significant Impact (FONSI), Airfield, Terminal, and Facility Improvements for the Kona International Airport at Keāhole, published by the Office of Environmental Quality Control (OEQC) in the March 23, 2013, issue of The Environmental Notice. Accordingly, all relevant mitigation from the EA and best management practices will be implemented to address the minimum impacts of this action.

BLNR – ISSUANCE OF A REVOCABLE PERMIT FOR AIRCRAFT PARKING  
FREDERICK PERKO AND SANDRA MAYVILLE

Page 3

REMARKS:

In accordance with Section 171-55, HRS, relating to Permits, the Department of Transportation proposes to issue a month-to-month Parking Permit to Frederick Perko and Sandra Mayville for aircraft parking space at KOA.

RECOMMENDATION:

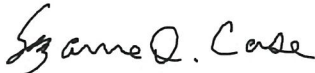
That the Board authorize the Department of Transportation to issue a month-to-month Parking Permit to Frederick Perko and Sandra Mayville, subject to: (1) terms and conditions herein outlined, which are by reference incorporated herein; and (2) such additional terms and conditions as may be prescribed by the Director of Transportation to best serve the interests of the State.

Respectfully submitted,

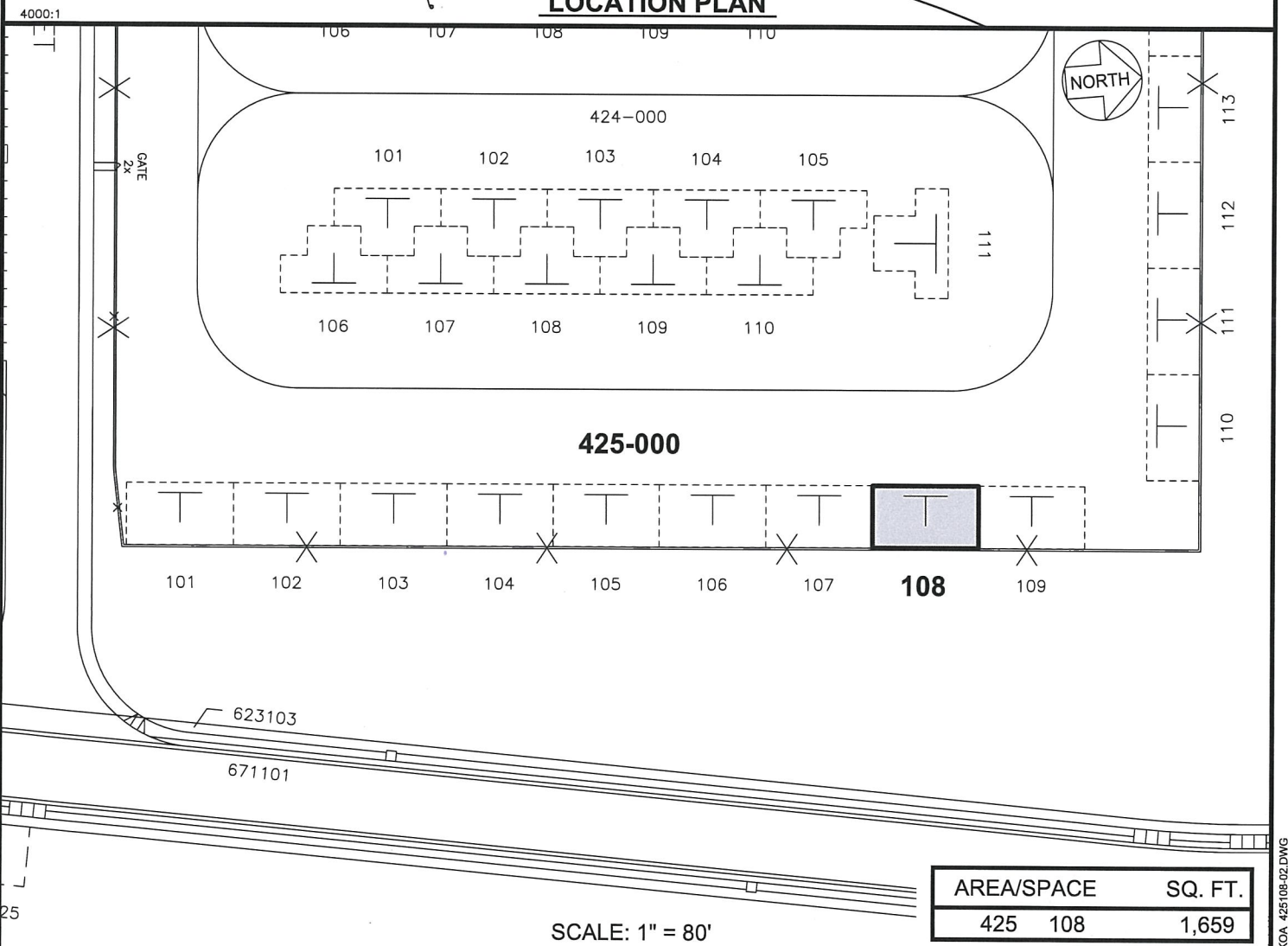
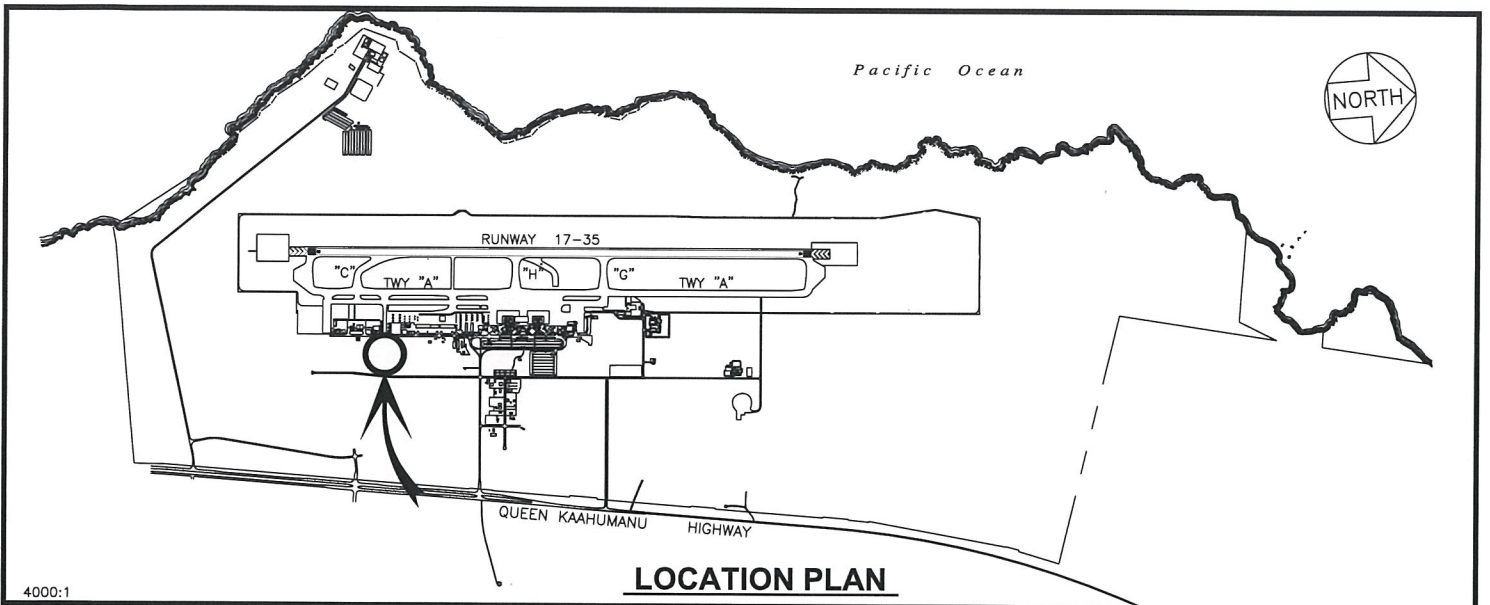


JADE T. BUTAY  
Director of Transportation

APPROVED FOR SUBMITTAL:



SUZANNE D. CASE  
Chairperson and Member



PP-22-N014

DATE : JULY 2022

EXHIBIT: **A**



FREDERICK PERKO  
SANDRA MAYVILLE

TIE-DOWN

425108  
PLAT 60

ELLISON ONIZUKA KONA INTERNATIONAL AIRPORT AT KEAHOLE

N:\AIRPORTS\KOA\_KONACAD\PMKOA\_425108-02.DWG