

DAVID Y. IGE  
GOVERNOR



JADE T. BUTAY  
DIRECTOR

Deputy Directors  
ROSS M. HIGASHI  
EDUARDO P. MANGLALLAN  
DAVID J. RODRIGUEZ  
EDWIN H. SNIFFEN

STATE OF HAWAII  
DEPARTMENT OF TRANSPORTATION  
869 PUNCHBOWL STREET  
HONOLULU, HAWAII 96813-5097

IN REPLY REFER TO:

Board of Land and  
Natural Resources  
State of Hawai'i  
Honolulu, Hawai'i

ISSUANCE OF A REVOCABLE PERMIT FOR THE OVERNIGHT STORAGE OF  
INTERNATIONAL TRASH AND CLEANING OF TRASH RECEPTACLES  
FREEMAN HOLDINGS OF HAWAII, LLC DBA MILLION AIR HONOLULU  
KALAELOA AIRPORT  
TAX MAP KEY: (1) 9-1-13: PORTION OF 32

O'AHU

REQUEST:

Issuance of a Revocable Permit for storage space to Freeman Holdings of Hawaii, LLC dba Million Air Honolulu, situated at Kalaeloa Airport (Airport).

LEGAL REFERENCE:

Section 171-55, Hawai'i Revised Statutes (HRS).

APPLICANT:

Freeman Holdings of Hawaii, LLC dba Million Air Honolulu (FREEMAN), a Hawai'i corporation, whose mailing address is 91-1151 Midway Road, Kapolei, Hawai'i 96707.

LOCATION AND TAX MAP KEY:

A portion of Kalaeloa Airport, Kapolei, Island of O'ahu, State of Hawai'i, identified by Tax Map Key: 1<sup>st</sup> Division, 9-1-13: portion of 32

AREA:

Building/Room No. 105-100A, containing an area of approximately 449 square feet, as shown and delineated on the attached map labeled Exhibit "A".

ZONING:

State Land Use District: Urban  
City and County of Honolulu LUO: P-2 (To be rezoned in the future)

**ITEM M-13**

BLNR – ISSUANCE OF A REVOCABLE PERMIT FOR THE OVERNIGHT STORAGE OF INTERNATIONAL TRASH AND CLEANING OF TRASH RECEPTACLES, FREEMAN HOLDINGS OF HAWAII DBA MILLION AIR HONOLULU

Page 2

LAND TITLE STATUS:

Non-ceded - Section 5(a) lands of the Hawai'i Admission Act  
DHHL 30% entitlement lands pursuant to Hawai'i Admission Act YES \_\_\_ NO X

CURRENT USE STATUS:

Land presently encumbered by Governor's Executive Order No. 3861, setting aside Kalaeloa Airport under the control and management of the Department of Transportation, Airports Division (DOTA), State of Hawai'i, for Airport Purposes.

CHARACTER OF USE:

The space will be used for the overnight storage of international trash and cleaning of trash receptacles in connection with FREEMAN's fixed-base operations at the Airport.

COMMENCEMENT DATE:

To be determined by the Director of Transportation at a later date.

MONTHLY RENTAL:

\$444.51 (\$269.40, as determined from the DOTA schedule of rates and charges established by appraisal of Airports property statewide plus \$175.11 for utilities).

SECURITY DEPOSIT:

\$1,333.53, or three (3) times the monthly rental in effect.

CHAPTER 343, HRS - ENVIRONMENTAL ASSESSMENT:

The subject land area is covered by the Final Environmental Assessment for the Kalaeloa Airfield Development Plan Improvements, State Project No. AO5011-02 dated June 2010. This Environmental Assessment was prepared by Wilson Okamoto Corp. for the State of Hawai'i, Department of Transportation, Airports Division, in part to evaluate the environmental effects of the recommended Kalaeloa Airfield Master Plan to meet existing and forecast general aviation demands.

REMARKS:

In accordance with 171-55 HRS, relating to Permits, the Department of Transportation proposes to issue a month-to-month revocable permit to FREEMAN, for the storage of overnight trash and the cleaning of trash receptacles, in connection with FREEMAN's fixed-base operations at the Airport.

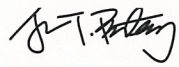
BLNR – ISSUANCE OF A REVOCABLE PERMIT FOR THE OVERNIGHT STORAGE OF  
INTERNATIONAL TRASH AND CLEANING OF TRASH RECEPTACLES, FREEMAN  
HOLDINGS OF HAWAII DBA MILLION AIR HONOLULU

Page 3

RECOMMENDATION:

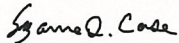
Based on this submittal, and testimony and facts presented, the Department of  
Transportation recommends the Board finds that approving the issuance of a month-to-  
month Revocable Permit to FREEMAN, including its conditions and rent, will serve the  
best interests of the State.

Respectfully submitted,

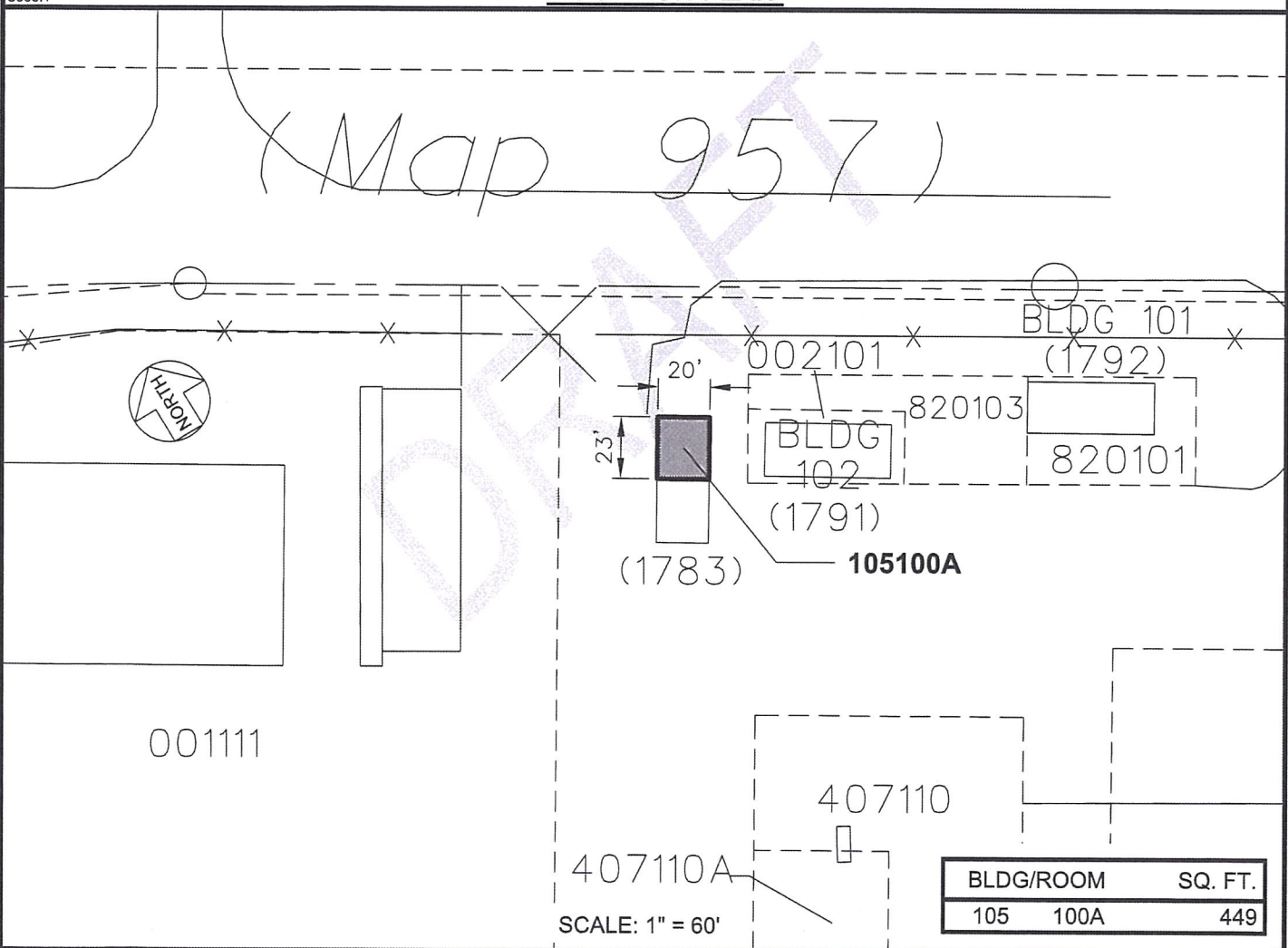
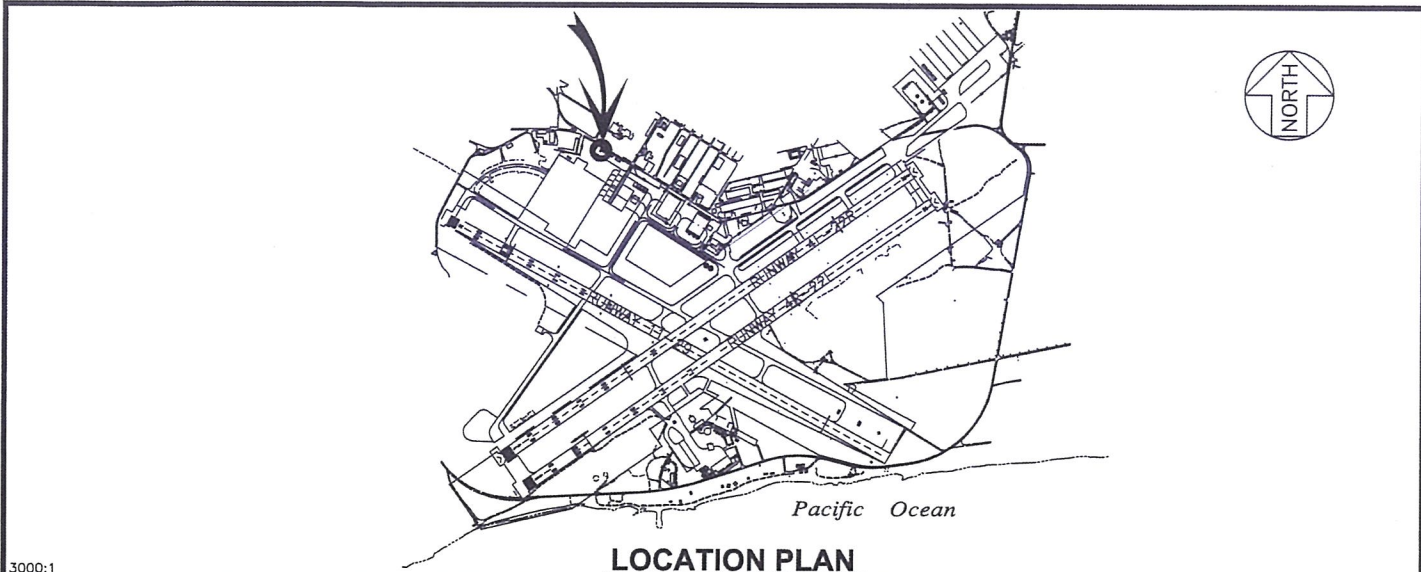


JADE T. BUTAY  
Director of Transportation

APPROVED FOR SUBMITTAL:



SUZANNE D. CASE  
Chairperson  
Board of Land and Natural Resources



RP-9317	DATE: SEPTEMBER 2022	EXHIBIT: <b>A</b>
	FREEMAN HOLDINGS OF HAWAII, LLC	BUILDING 105
		105100A

**KALAELOA AIRPORT**

N:\AIRPORTS\AIR\_KALAELOA\CAD\PAIRP\_105100A-02.DWG