

DAVID Y. IGE  
GOVERNOR



STATE OF HAWAII  
DEPARTMENT OF TRANSPORTATION  
869 PUNCHBOWL STREET  
HONOLULU, HAWAII 96813-5097

JADE T. BUTAY  
DIRECTOR

Deputy Directors  
ROSS M. HIGASHI  
EDUARDO P. MANGLALLAN  
DAVID J. RODRIGUEZ  
EDWIN H. SNIFFEN

IN REPLY REFER TO:

Board of Land and  
Natural Resources  
State of Hawai'i  
Honolulu, Hawai'i

ISSUANCE OF A REVOCABLE PERMIT FOR COMMERCIAL USE OF A T-HANGAR  
FOR STORAGE AND MAINTENANCE OF AIRCRAFT IN SUPPORT OF AN  
AERONAUTICAL MAINTENANCE BUSINESS  
PMX AVIATION SERVICES LLC.  
DANIEL K. INOUE INTERNATIONAL AIRPORT  
TAX MAP KEY: (1) 1-1-076: 021

O'AHU

REQUEST:

Issuance of a Revocable Permit for commercial use of a T-Hangar for storage and maintenance of an aircraft in support of an aeronautical maintenance business to PMX Aviation Services LLC., situated at Daniel K. Inouye International Airport.

LEGAL REFERENCE:

Section 171-55, Hawai'i Revised Statutes.

APPLICANT:

PMX Aviation Services LLC., whose mailing address is 14 Lagoon Drive, Honolulu, Hawai'i 96819.

LOCATION AND TAX MAP KEY:

Daniel K. Inouye International Airport (HNL), Island of O'ahu, State of Hawai'i, identified by Tax Map Key: 1<sup>st</sup> Division, 1-1-076: 021.

AREA:

Area/Lot No. 421-116, containing an area of approximately 1,247 square feet, as shown and delineated on the attached map labeled Exhibit "A".

**ITEM M-4**

BLNR – ISSUANCE OF A REVOCABLE PERMIT FOR COMMERCIAL USE OF A  
T-HANGAR FOR STORAGE AND MAINTENANCE OF AIRCRAFT IN SUPPORT  
OF AN AERONAUTICAL MAINTENANCE BUSINESS  
PMX AVIATION SERVICES LLC

Page 2

ZONING:

State Land Use District: Urban  
City and County of Honolulu LUO: Industrial (I-2)

LAND TITLE STATUS:

Non-Ceded - Section 5(a) lands of the Hawai'i Admission Act  
DHHL 30% entitlement lands pursuant to Hawai'i Admission Act YES \_\_\_ NO X

CURRENT USE STATUS:

Land presently encumbered by Governor's Executive Order No. 3201, dated June 8, 1983, setting aside 3,152.177 acres designated as Daniel K. Inouye International Airport under the control and management of the State of Hawai'i, Department of Transportation, Airports Division (DOTA) for Airport Purposes.

CHARACTER OF USE:

T-Hangar for storage and maintenance of an aircraft in support of a commercial aeronautical maintenance business (1964 Piper Twin Comanche PA30 / N7358Y).

COMMENCEMENT DATE:

To be determined by the Director of Transportation at a later date.

MONTHLY RENTAL:

\$1,551.40 (\$1,496.40, as determined from the DOTA schedule of rates and charges, commercial rate for T-Hangar, established by appraisal of Airports property statewide plus \$55 for electricity).

SECURITY DEPOSIT:

\$4,654.20, or three (3) times the monthly rental in effect.

DCCA VERIFICATION:

Place of business registration confirmed: YES X NO \_\_\_  
Registered business name confirmed: YES X NO \_\_\_  
Good standing confirmed: YES X NO \_\_\_

BLNR – ISSUANCE OF A REVOCABLE PERMIT FOR COMMERCIAL USE OF A  
T-HANGAR FOR STORAGE AND MAINTENANCE OF AIRCRAFT IN SUPPORT  
OF AN AERONAUTICAL MAINTENANCE BUSINESS  
PMX AVIATION SERVICES LLC

Page 3

CHAPTER 343, HRS - ENVIRONMENTAL ASSESSMENT:

The environmental impacts of the proposed action to the subject land area are covered by the Honolulu International airport Master Plan Update and Noise Compatibility Program Environmental Assessment (EA), State Project No. AO1011-033. The EA is a joint State and Federal document, dated September 1989 and published in the October 23, 1989, issue of the OEQC Bulletin. Accordingly, relevant mitigation from the EA and DOTA environmental best management practice will address minimal impacts from this action.

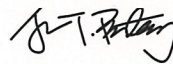
REMARKS:

In accordance with Section 171-55, HRS, relating to Permits, the Department of Transportation proposes to issue a month-to-month revocable permit to PMX Aviation Services LLC., for a T-Hangar for the storage and maintenance of aircraft in support of a commercial aeronautical maintenance business, situated at Daniel K. Inouye International Airport.

RECOMMENDATION:

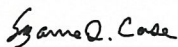
Based on this submittal, and testimony and facts presented, the Department of Transportation recommends the Board finds that approving the issuance of a month-to-month Revocable Permit to PMX Aviation Services LLC., including its conditions and rent, will serve the best interests of the State.

Respectfully submitted,

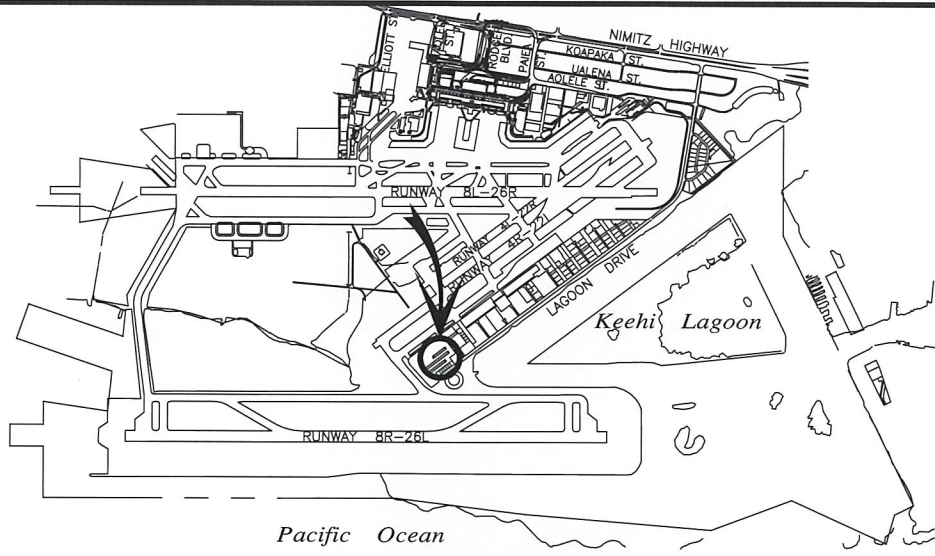


JADE T. BUTAY  
Director of Transportation

APPROVED FOR SUBMITTAL:

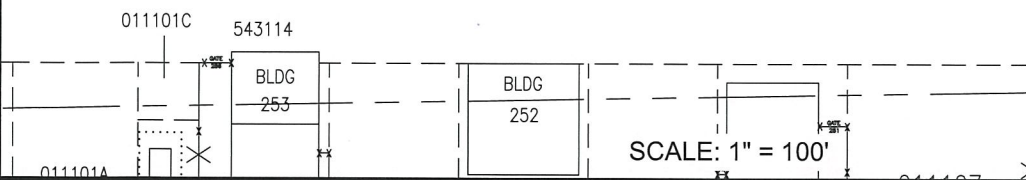
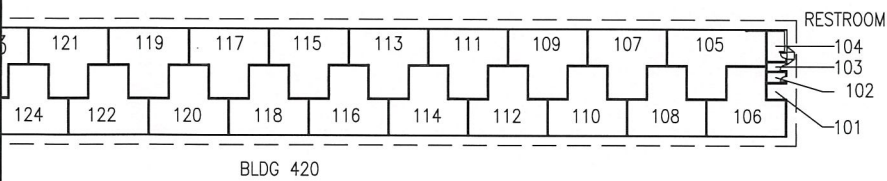
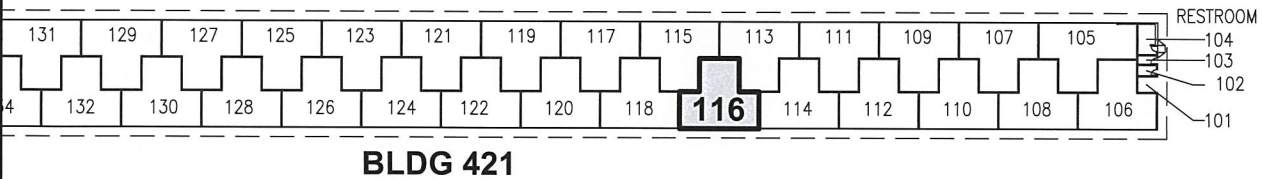
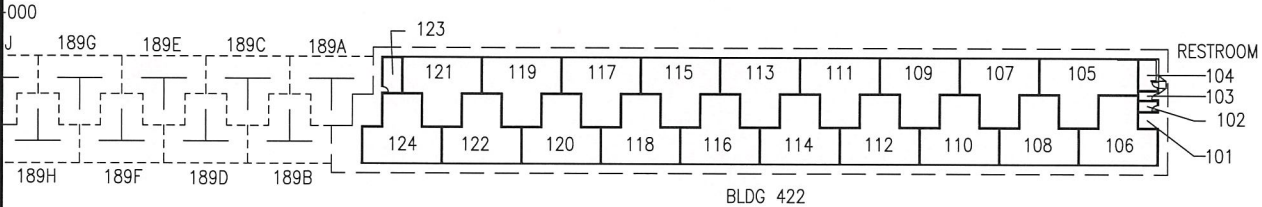
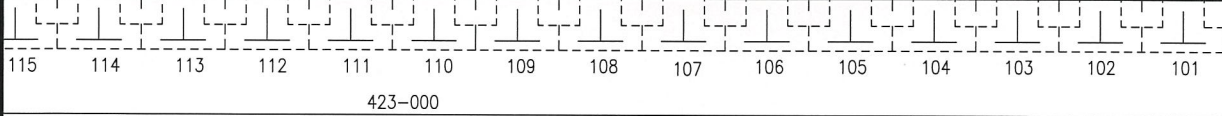


SUZANNE D. CASE  
Chairperson  
Board of Land and Natural Resources



**LOCATION PLAN**

5000:1



SCALE: 1" = 100'

BLDG/ROOM	SQ. FT.
421 116	1,247

RP-9319

DATE : SEPTEMBER 2022

EXHIBIT: **A**



**PMX AVIATION SERVICES LLC**

**T-HANGAR**

**421116  
PLAT 45**