

DAVID Y. IGE  
GOVERNOR



STATE OF HAWAII  
DEPARTMENT OF TRANSPORTATION  
869 PUNCHBOWL STREET  
HONOLULU, HAWAII 96813-5097

JADE T. BUTAY  
DIRECTOR

Deputy Directors  
ROSS M. HIGASHI  
EDUARDO P. MANGLALLAN  
DAVID J. RODRIGUEZ  
EDWIN H. SNIFFEN

IN REPLY REFER TO:

Board of Land and  
Natural Resources  
State of Hawai'i  
Honolulu, Hawai'i

ISSUANCE OF A REVOCABLE PERMIT FOR COMMERCIAL USE OF A  
T-HANGAR FOR STORAGE OF AIRCRAFT AND A MAINTENANCE HANGAR  
PMX AVIATION SERVICES LLC  
ELLISON ONIZUKA KONA INTERNATIONAL AIRPORT AT KEĀHOLE  
TAX MAP KEY: (3) 7-3-43: PORTION OF 003 HAWAI'I

LEGAL REFERENCE:

Section 171-55, Hawai'i Revised Statutes (HRS).

APPLICANT:

PMX Aviation Services LLC (PMX), a Hawai'i limited liability company, whose  
business address is 73-1029 Ahulani Street, Kailua-Kona, Hawai'i 96740.

LOCATION AND TAX MAP KEY:

Portion of Ellison Onizuka Kona International Airport at Keāhole (KOA), Kailua-Kona,  
Island of Hawai'i, identified by Tax Map Key: 3rd Division, 7-3-43: Portion of 003.

AREA:

Building/Room No. 421-107, containing an area of approximately 1,464 square feet, as  
shown and delineated on the attached Exhibit A.

ZONING:

State Land Use District:  
County of Hawai'i:

Urban & Conservation  
Industrial (MG-1a) and Open

**ITEM M-10**

BLNR – ISSUANCE OF A REVOCABLE PERMIT FOR COMMERCIAL USE OF A  
T-HANGAR FOR STORAGE OF AIRCRAFT AND A MAINTENANCE HANGAR  
PMX AVIATION SERVICES LLC

Page 2

LAND TITLE STATUS:

Section 5(a) lands of the Hawai'i Admission Act: Ceded  
DHHL 30% entitlement lands pursuant to Hawai'i Admission Act YES\_\_\_ NO X

CURRENT USE STATUS:

Land presently encumbered by Governor's Executive Order No. 3074, dated August 20, 1981, setting aside 4,204.10 acres designated as KOA under the control and management of the State of Hawai'i, Department of Transportation, Airports Division for Airport Purposes.

CHARACTER OF USE:

PMX will use the T-hangar for storage of aircraft (1964 Piper PA30, Tail No. N-7358Y) and a maintenance hangar in support of its Aviation Maintenance Service operation at KOA.

COMMENCEMENT DATE:

Upon complete execution of the revocable permit.

MONTHLY RENTAL:

\$1,756.80 (as determined from the Appraisal Report for the Estimate of Annual, Fair Market Lease Rental Values of T-Hangars and Sprung Structures, Ellison Onizuka Kona International Airport at Keāhole, prepared by ACM Consultants, Inc., dated 3/15/21).

SECURITY DEPOSIT:

\$5,270.40, or three (3) times the monthly rental in effect.

DCCA VERIFICATION:

Place of business registration confirmed:	YES <u>X</u>	NO _____
Registered business name confirmed:	YES <u>X</u>	NO _____
Good standing confirmed:	YES <u>X</u>	NO _____

CHAPTER 343, HRS - ENVIRONMENTAL ASSESSMENT:

The State of Hawai'i, Department of Transportation, Airports Division, has determined the subject land areas are covered by the Final Environmental Assessment (EA)/Finding of No Significant Impact (FONSI), Airfield, Terminal, and Facility Improvements for the Kona International Airport at Keāhole, published by the Office of Environmental Quality

BLNR – ISSUANCE OF A REVOCABLE PERMIT FOR COMMERCIAL USE OF A  
T-HANGAR FOR STORAGE OF AIRCRAFT AND A MAINTENANCE HANGAR  
PMX AVIATION SERVICES LLC

Page 3

Control (OEQC) in the March 23, 2013, issue of The Environmental Notice.  
Accordingly, all relevant mitigation from the EA and best management practices will be  
implemented to address the minimum impacts of this action.

REMARKS:

In accordance with Section 171-55, HRS, relating to Permits, the Department of  
Transportation proposes to issue a month-to-month revocable permit to PMX for a  
T-Hangar for storage of aircraft and a maintenance hangar, in support of its Aviation  
Maintenance Service operation at KOA.

RECOMMENDATION:

Based on this submittal, and testimony and facts presented, the Department of  
Transportation recommends the Board finds that approving the issuance of a month-to-  
month Revocable Permit to PMX, including its conditions and rent, will serve the best  
interests of the State.

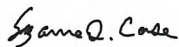
Respectfully submitted,



JADE T. BUTAY

Director of Transportation

APPROVED FOR SUBMITTAL:

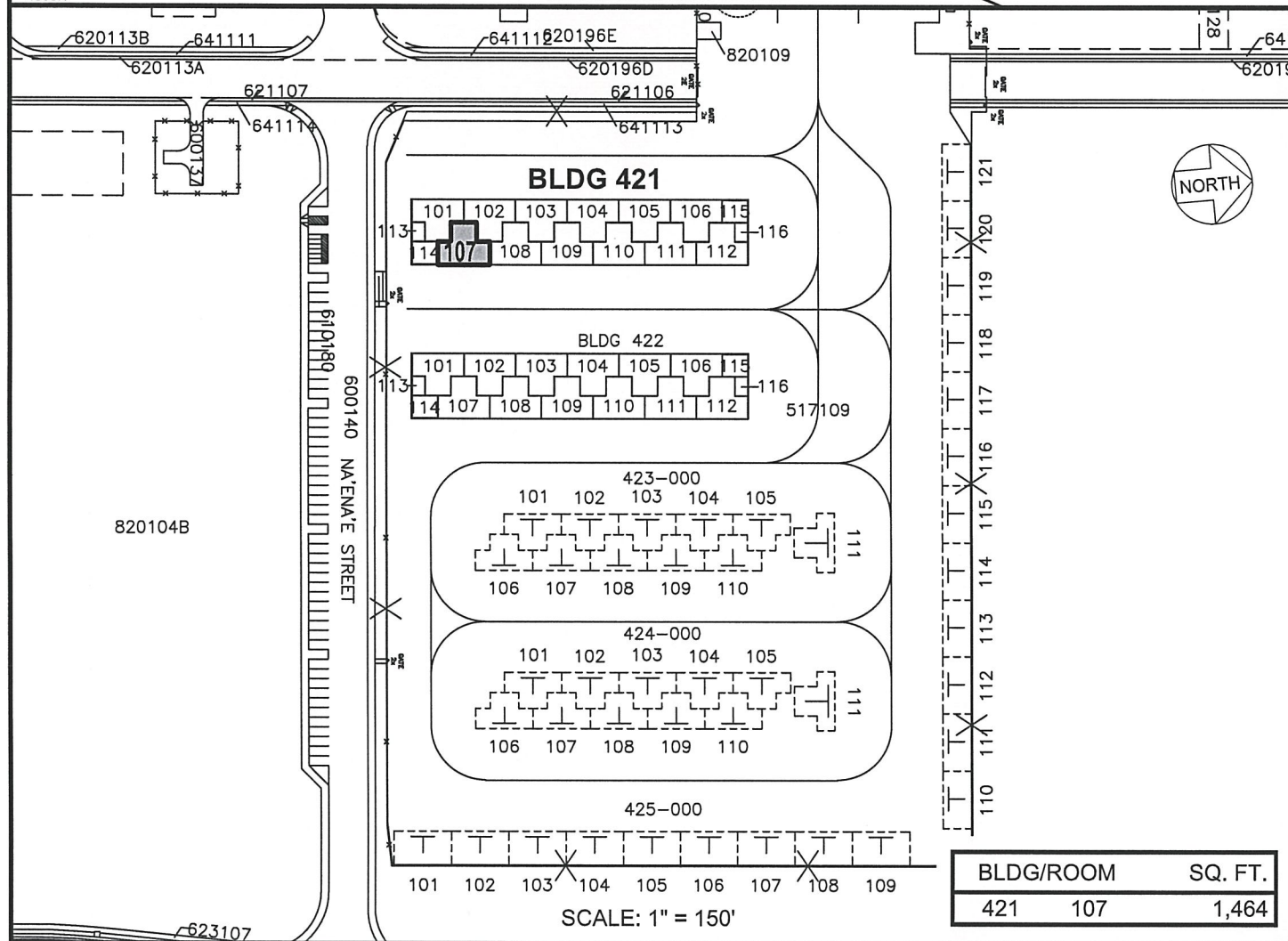
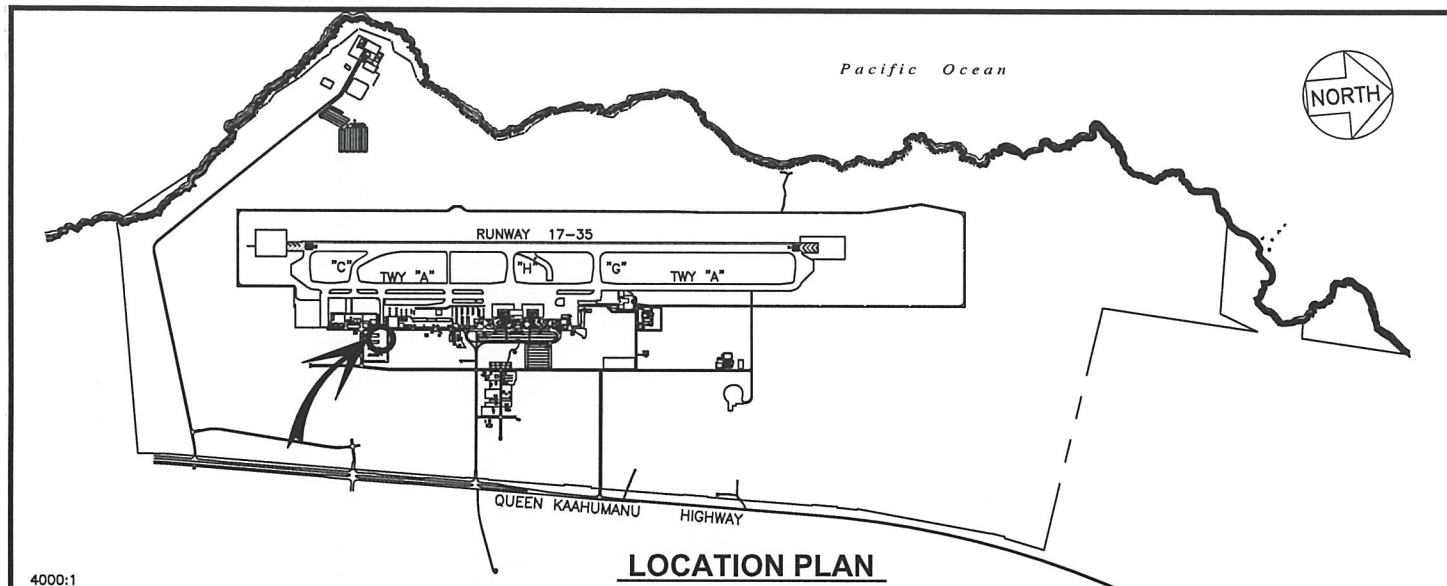


SUZANNE D. CASE

Chairperson

Board of Land and Natural Resources





RP-9347

DATE : SEPTEMBER 2022

EXHIBIT: **A**



Airports Division

PMX AVIATION SERVICES LLC

T-HANGAR

421107

PLAT 60

ELLISON ONIZUKA KONA INTERNATIONAL AIRPORT AT KEAHOLE

N:\AIRPORTS\KOA\_KONA\CAD\PMX\KOA\_421107-02.DWG