

JOSH GREEN, M.D.
GOVERNOR



STATE OF HAWAII
DEPARTMENT OF TRANSPORTATION
869 PUNCHBOWL STREET
HONOLULU, HAWAII 96813-5097

EDWIN H. SNIFFEN
DIRECTOR

Deputy Directors
DREANALEE K. KALILI
TAMMY L. LEE
ROBIN K. SHISHIDO
JAMES KUNANE TOKIOKA

IN REPLY REFER TO:

Board of Land and
Natural Resources
State of Hawaii
Honolulu, Hawaii

ISSUANCE OF A REVOCABLE PERMIT FOR IMPROVED, UNPAVED LAND
U.S. DEPARTMENT OF AGRICULTURE, ANIMAL AND PLANT HEALTH
INSPECTION SERVICE, WILDLIFE SERVICES
MOLOKAI AIRPORT
TAX MAP KEY: (2) 5-2-004: PORTION OF 008

MAUI

APPLICANT:

U.S. Department of Agriculture, Animal and Plant Health Inspection Service, Wildlife Services (USDA-Wildlife), whose business address is 1 Kahului Airport Road, Kahului, Hawaii 96732.

LEGAL REFERENCE:

Section 171-55, Hawaii Revised Statutes (HRS), as amended.

LOCATION:

Portion of Molokai Airport (MKK), Hoolehua, Island of Molokai, County of Maui, identified by Tax Map Key: 2nd Division, 5-2-004: Portion of 008.

AREA:

Area/Space No. 002-102B, containing an area of approximately 1,015 square feet of improved, unpaved land, as shown, and delineated on the attached map labeled Exhibit A.

ZONING:

State Land Use District: Agricultural
County of Maui: Interim Zoning Provisions of the Maui County Zoning Code

ITEM M-8

BLNR – ISSUANCE OF A REVOCABLE PERMIT FOR IMPROVED, UNPAVED LAND
U.S. DEPARTMENT OF AGRICULTURE, ANIMAL AND PLANT HEALTH INSPECTION
SERVICE, WILDLIFE SERVICES, MOLOKAI AIRPORT
Page 2

LAND TITLE STATUS:

Section 5(a) lands of the Hawaii Admission Act: Ceded
DHHL 30% entitlement lands pursuant to Hawaii Admission Act YES ___ NO X

CURRENT USE STATUS:

Land presently encumbered by Governor's Executive Order No. 1611, dated February 1, 1954, setting aside 10.321 acres, being a portion of Molokai Airport under the control and management of the Hawaii Aeronautics Commission (subsequently transferred to the Department of Transportation) for Public Purposes.

CHARACTER OF USE:

USDA-Wildlife will use the improved, unpaved land for one (1) office trailer and one (1) storage container to house tools needed to conduct wildlife hazard control operations at the Airport.

COMMENCEMENT DATE:

Upon complete execution of the revocable permit.

MONTHLY RENTAL:

\$198.77 (based on a rate of \$2.35 per square foot per annum for improved, unpaved land, as determined from the DOTA schedule of rates and charges established by appraisal of Airports property statewide).

SECURITY DEPOSIT:

Not required

CHAPTER 343, HRS - ENVIRONMENTAL ASSESSMENT:

The State of Hawaii, Department of Transportation, Airports Division (HDOT-A), has determined that the subject areas are covered by the Molokai Airport Improvements Environmental Assessment (EA), published by the Environmental Quality Commission (EQC) in the December 23, 1981 issue of the EQC Bulletin. Accordingly, all relevant mitigation from the EA and best management practices will be implemented to address the minimum impacts of this action.

BLNR – ISSUANCE OF A REVOCABLE PERMIT FOR IMPROVED, UNPAVED LAND
U.S. DEPARTMENT OF AGRICULTURE, ANIMAL AND PLANT HEALTH INSPECTION
SERVICE, WILDLIFE SERVICES, MOLOKAI AIRPORT

Page 3

REMARKS:

In accordance with Section 171-55, HRS, relating to Permits, the Department of Transportation proposes to issue a month-to-month revocable permit to the USDA-Wildlife for improved, unpaved land for one (1) office trailer and one (1) storage container to house tools used to conduct wildlife hazard control operations at the Airport.

RECOMMENDATION:

Based on this submittal, and testimony and facts presented, the Department of Transportation recommends the Board finds that approving the issuance of a month-to-month Revocable Permit to USDA-Wildlife, including its conditions and rent, will serve the best interests of the State.

Respectfully submitted,

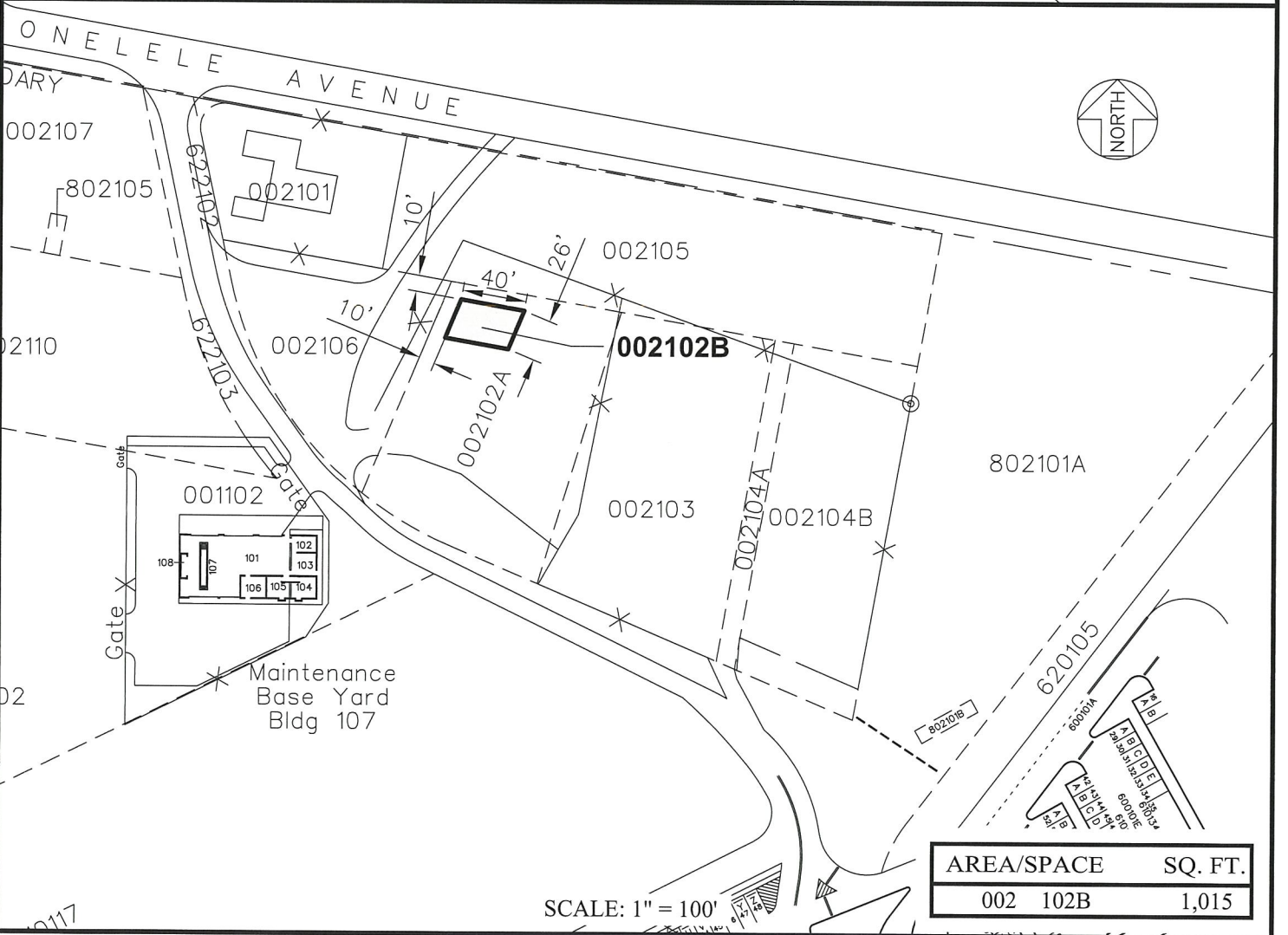
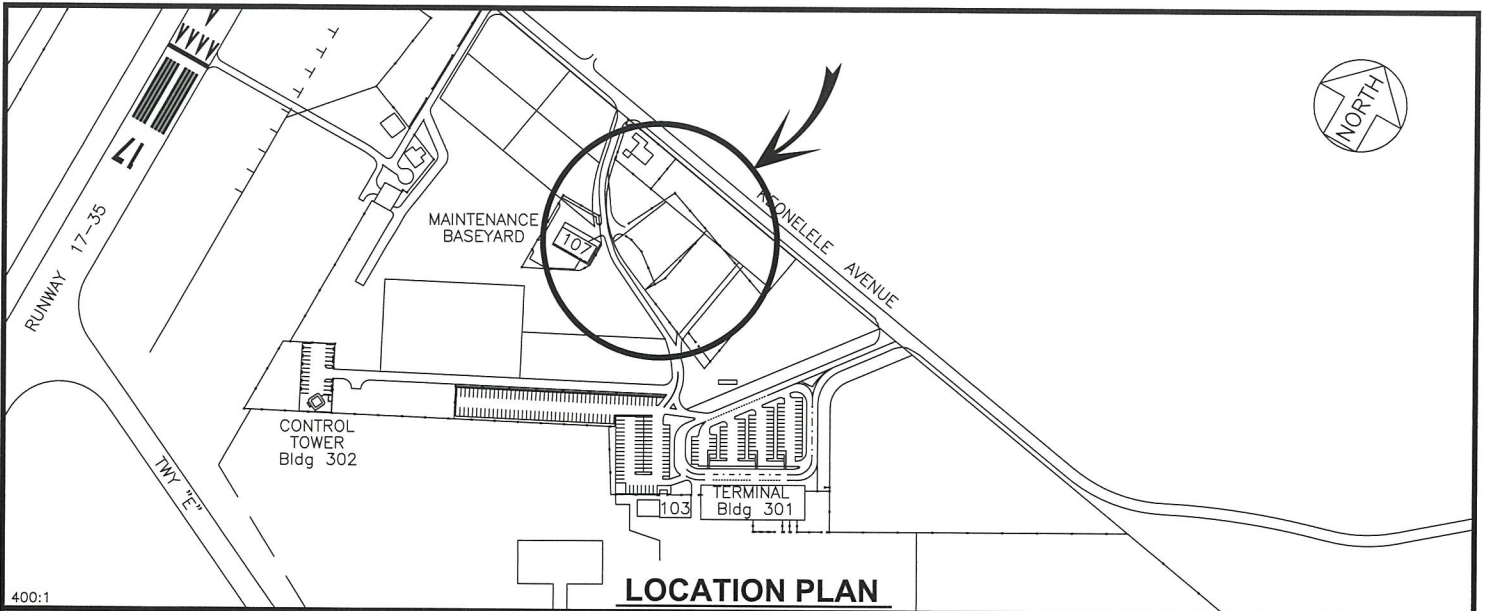


EDWIN H. SNIFFEN
Director of Transportation

APPROVED FOR SUBMITTAL:



DAWN N. S. CHANG
Chairperson
Board of Land and Natural Resources



RP-9375

DATE : DECEMBER 2022

EXHIBIT: **A**



Airports Division

U.S. DEPT. OF AGRICULTURE,
ANIMAL AND PLANT HEALTH
INSPECTION SERVICE, WILDLIFE
SERVICES

LOT

002102B

PLAT 32, A1

MOLOKAI AIRPORT