



STATE OF HAWAII
DEPARTMENT OF TRANSPORTATION
869 PUNCHBOWL STREET
HONOLULU, HAWAII 96813-5097

EDWIN H. SNIFFEN
DIRECTOR

Deputy Directors
FORD N. FUCHIGAMI
DREANALEE K. KALILI
TAMMY L. LEE
ROBIN K. SHISHIDO

IN REPLY REFER TO:

Board of Land and
Natural Resources
State of Hawaii
Honolulu, Hawaii

ISSUANCE OF A REVOCABLE PERMIT FOR RAMP SPACE
FOR GROUND SERVICE EQUIPMENT PARKING
AIR SERVICE HAWAII, INC.
HILO INTERNATIONAL AIRPORT
TAX MAP KEY: (3) 2-1-12: PORTION OF 009

HAWAII

LEGAL REFERENCE:

Section 171-55, Hawaii Revised Statutes (HRS), as amended.

APPLICANT:

Air Service Hawaii, Inc. (ASH), a Hawaii corporation, whose mailing address is
95 Nakolo Place, Honolulu, Hawaii 96819.

LOCATION AND TAX MAP KEY:

Portion of Hilo International Airport (ITO), Hilo, Island of Hawaii, identified by
Tax Map Key: 3rd Division, 2-1-12: Portion of 009.

AREA:

Area/Space No. 006-112, containing an area of approximately 380 square feet of
improved, paved land, as shown and delineated on the attached Exhibit A.

ZONING:

State Land Use District: Urban
County of Hawaii: Industrial (ML-20)

ITEM M-3

BLNR – ISSUANCE OF A REVOCABLE PERMIT FOR RAMP SPACE FOR GROUND SERVICE EQUIPMENT PARKING, AIR SERVICE HAWAII, INC.

Page 2

LAND TITLE STATUS:

Section 5(a) lands of the Hawaii Admission Act: Ceded
DHHL 30% entitlement lands pursuant to the Hawaii Admission Act: YES __ NO X

CURRENT USE STATUS:

Land presently encumbered by Governor's Executive Order No. 1519, dated July 17, 1952, setting aside 550.881 acres, being a portion of General Lyman Field under the control and management of the Hawaii Aeronautics Commission (subsequently transferred to the Department of Transportation) as a site for the Hilo Airport, now known as Hilo International Airport.

CHARACTER OF USE:

ASH will use the space for ground service equipment (GSE) parking to support fixed-based operations (FBO) at ITO.

COMMENCEMENT DATE:

To be determined by the Director of Transportation at a later date.

MONTHLY RENTAL:

\$49.40 (as determined from the Department of Transportation, Airports schedule of rates and charges established by appraisal of Airports property statewide.)

SECURITY DEPOSIT:

\$148.20, or three (3) times the monthly rental in effect.

DCCA VERIFICATION:

Place of business registration confirmed: YES X NO _____
Registered business name confirmed: YES X NO _____
Good standing confirmed: YES X NO _____

CHAPTER 343, HRS - ENVIRONMENTAL ASSESSMENT:

The State of Hawaii, Department of Transportation, Airports, has determined that the subject land areas are covered by the Hilo International Airport Final Environmental Assessment (EA), dated April 15, 2003, and published by the Office of Environmental Quality Control (OEQC) in the May 8, 2003, issue of The Environmental Notice. Accordingly, all relevant mitigation from the EA and best management practices will be implemented to address the minimum impacts of this action.

BLNR – ISSUANCE OF A REVOCABLE PERMIT FOR RAMP SPACE FOR GROUND SERVICE EQUIPMENT PARKING, AIR SERVICE HAWAII, INC.

Page 3

REMARKS:

In accordance with Section 171-55, HRS, relating to Permits, the Department of Transportation (DOT) proposes to issue a month-to-month Revocable Permit to ASH for GSE parking to support its FBO operation at ITO.

RECOMMENDATION:

Based on this submittal, and testimony and facts presented, the DOT recommends the Board finds that approving the issuance of a month-to-month Revocable Permit to ASH, including its conditions and rent, will serve the best interests of the State.

Respectfully submitted,

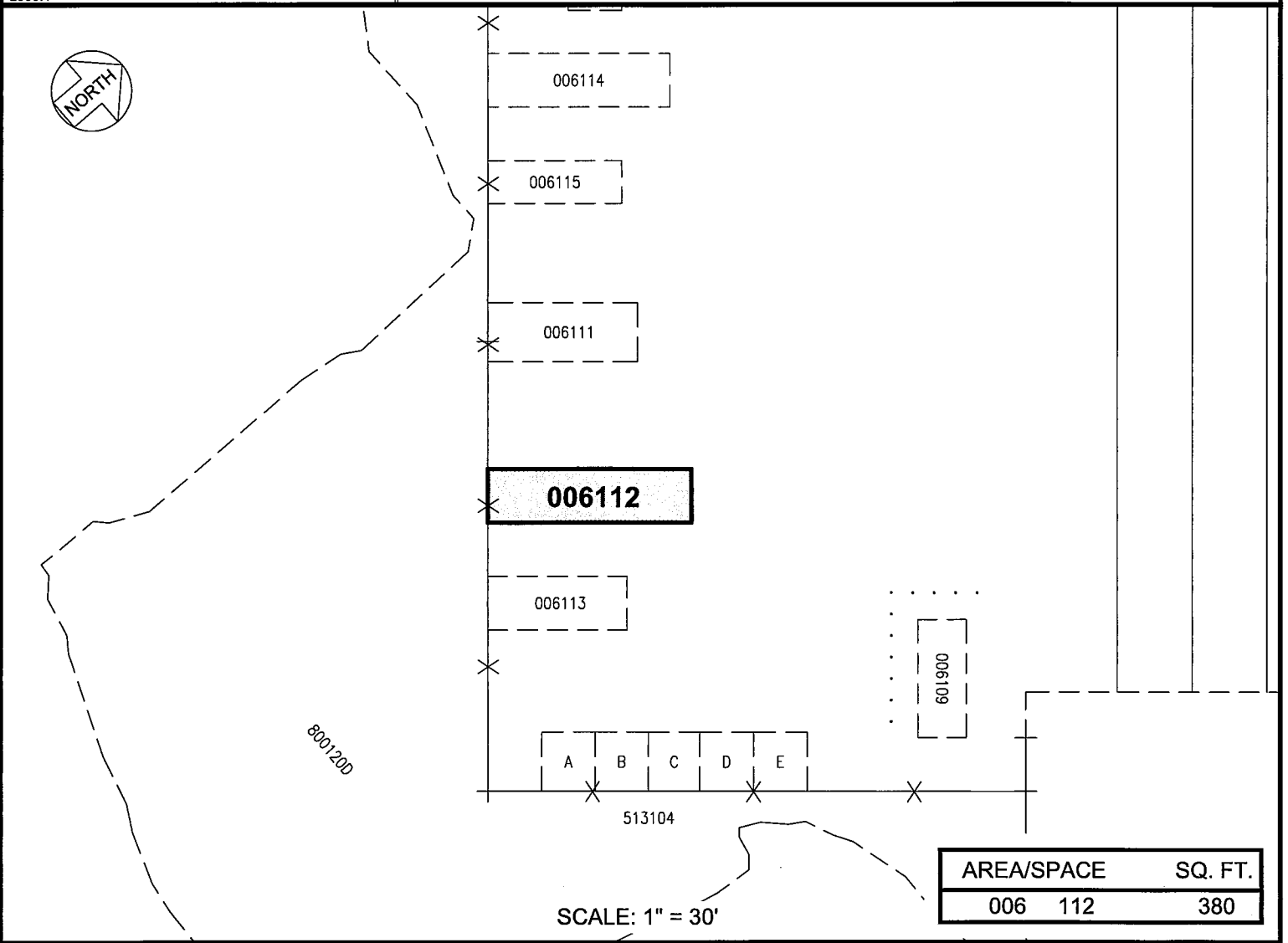
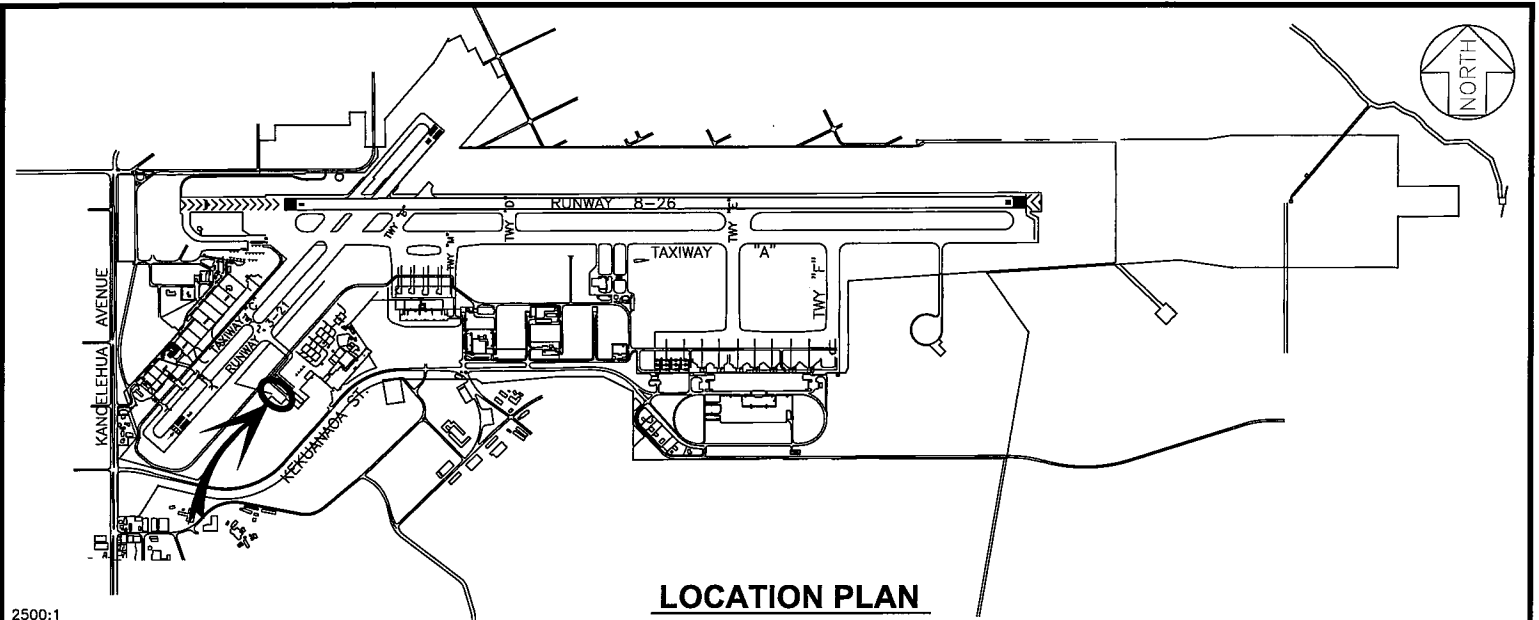


EDWIN H. SNIFFEN
Director of Transportation

APPROVED FOR SUBMITTAL:



DAWN N. S. CHANG
Chairperson
Board of Land and Natural Resources



DATE : MARCH 2023

EXHIBIT: **A**



AIR SERVICE HAWAII, INC.

LOT

006112

HILO INTERNATIONAL AIRPORT

N:\AIRPORTS\ITC_HILO\CAD\PM\ITC_006112-02.DWG