



STATE OF HAWAII
DEPARTMENT OF TRANSPORTATION
869 PUNCHBOWL STREET
HONOLULU, HAWAII 96813-5097

EDWIN H. SNIFFEN
DIRECTOR

Deputy Directors
FORD N. FUCHIGAMI
DREANALEE K. KALILI
TAMMY L. LEE
ROBIN K. SHISHIDO

IN REPLY REFER TO:

Board of Land and
Natural Resources
State of Hawaii
Honolulu, Hawaii

ISSUANCE OF A REVOCABLE PERMIT FOR RAMP SPACE FOR PARKING OF
FUEL TRUCKS, COMPANY VEHICLES AND GROUND SERVICE EQUIPMENT
AIR SERVICE HAWAII, INC.
HILO INTERNATIONAL AIRPORT
TAX MAP KEY: (3) 2-1-12: PORTION OF 009

HAWAII

LEGAL REFERENCE:

Section 171-55, Hawaii Revised Statutes (HRS), as amended.

APPLICANT:

Air Service Hawaii, Inc. (ASH), a Hawaii corporation, whose mailing address is
95 Nakolo Place, Honolulu, Hawaii 96819.

LOCATION AND TAX MAP KEY:

Portion of Hilo International Airport (ITO), Hilo, Island of Hawaii, identified by
Tax Map Key: 3rd Division, 2-1-12: Portion of 009.

AREAS:

IMPROVED, PAVED LAND

Area/Space No. 619-101, containing an area of approximately 5,800 square feet,
Area/Space No. 619-102, containing an area of approximately 990 square feet,
Area/Space No. 619-103, containing an area of approximately 504 square feet, and
as shown and delineated on the attached Exhibit A.

ZONING:

State Land Use District: Urban
County of Hawaii: Industrial (ML-20)

ITEM M-12

BLNR – ISSUANCE OF A REVOCABLE PERMIT FOR RAMP SPACE FOR PARKING OF FUEL TRUCKS, COMPANY VEHICLES AND GROUND SERVICE EQUIPMENT AIR SERVICE HAWAII, INC.

Page 2

LAND TITLE STATUS:

Section 5(a) lands of the Hawaii Admission Act: Ceded
DHHL 30% entitlement lands pursuant to the Hawaii Admission Act: YES NO

CURRENT USE STATUS:

Land presently encumbered by Governor’s Executive Order No. 1519, dated July 17, 1952, setting aside 550.881 acres, being a portion of General Lyman Field under the control and management of the Hawaii Aeronautics Commission (subsequently transferred to the Department of Transportation) as a site for the Hilo Airport, now known as Hilo International Airport.

CHARACTER OF USE:

ASH will use Area/Space No. 619-101 for fuel truck parking to support its fixed-based operation at ITO.

ASH will use Area/Space Nos. 619-102 and 619-103 for ground service equipment (GSE) and company vehicle parking to support its fixed-based operation at ITO.

COMMENCEMENT DATE:

To be determined by the Director of Transportation at a later date.

MONTHLY RENTAL:

\$948.22 (based on a rate of \$1.56 per square foot per annum for improved, paved land, as determined from the Department of Transportation, Airports schedule of rates and charges established by appraisal of Airports property statewide.)

SECURITY DEPOSIT:

\$2,844.66, or three times the monthly rental in effect.

DCCA VERIFICATION:

Place of business registration confirmed: YES NO
Registered business name confirmed: YES NO
Good standing confirmed: YES NO

BLNR – ISSUANCE OF A REVOCABLE PERMIT FOR RAMP SPACE FOR PARKING OF FUEL TRUCKS, COMPANY VEHICLES AND GROUND SERVICE EQUIPMENT
AIR SERVICE HAWAII, INC.

Page 3

CHAPTER 343, HRS - ENVIRONMENTAL ASSESSMENT:

This action is de minimis and is exempt from the preparation of an exemption notice in accordance with HAR, Section 11-200.1-16(b) and the Department of Transportation, Comprehensive Exemption List, concurred to by the Environmental Advisory Council on February 1, 2022, Exemption Type 8, Part 1 (8)g: Creation or extensions of leases, revocable permits or easements involving negligible or minor expansion of change of use beyond that previously existing.

REMARKS:

In accordance with Section 171-55, HRS, relating to Permits, the Department of Transportation (DOT) proposes to issue a month-to-month Revocable Permit to ASH for parking of fuel trucks, company vehicles and GSE to support its fixed-base operation at ITO.

RECOMMENDATION:

Based on this submittal, and testimony and facts presented, the DOT recommends the Board finds that approving the issuance of a month-to-month Revocable Permit to ASH, including its conditions and rent, will serve the best interests of the State.

Respectfully submitted,

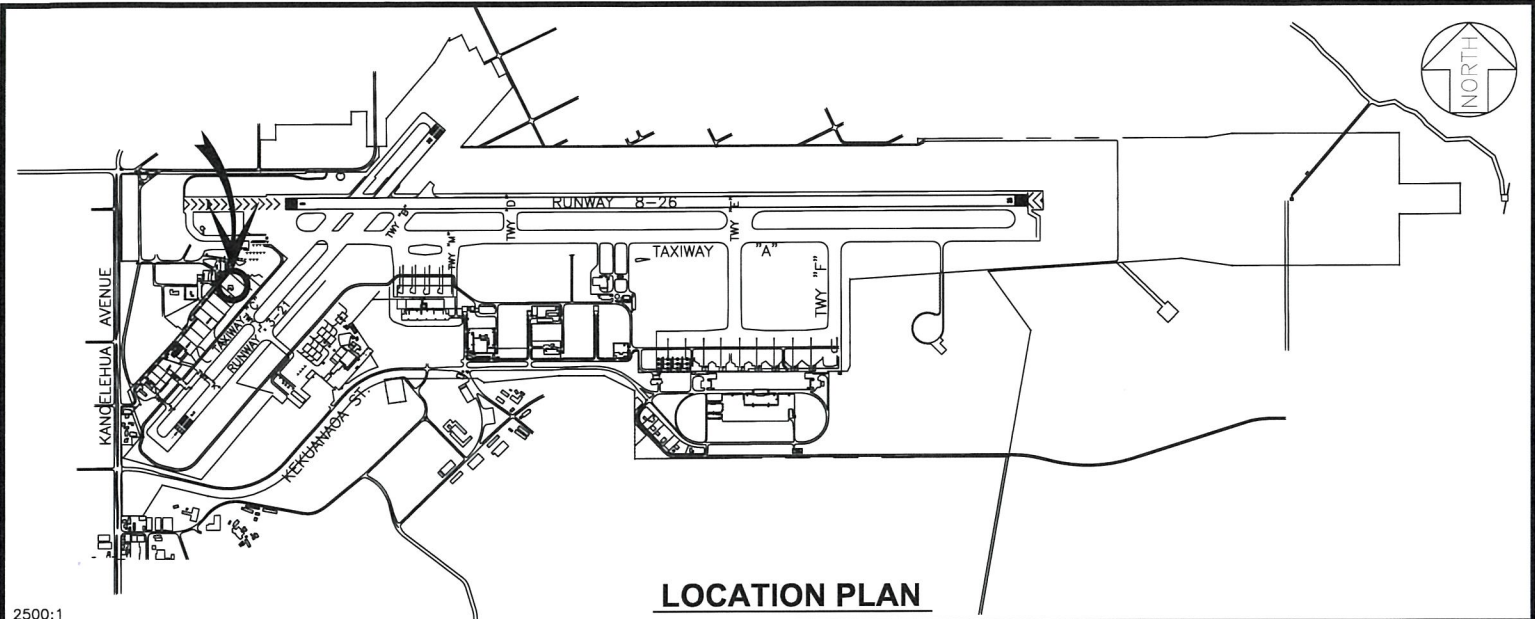


EDWIN H. SNIFFEN
Director of Transportation

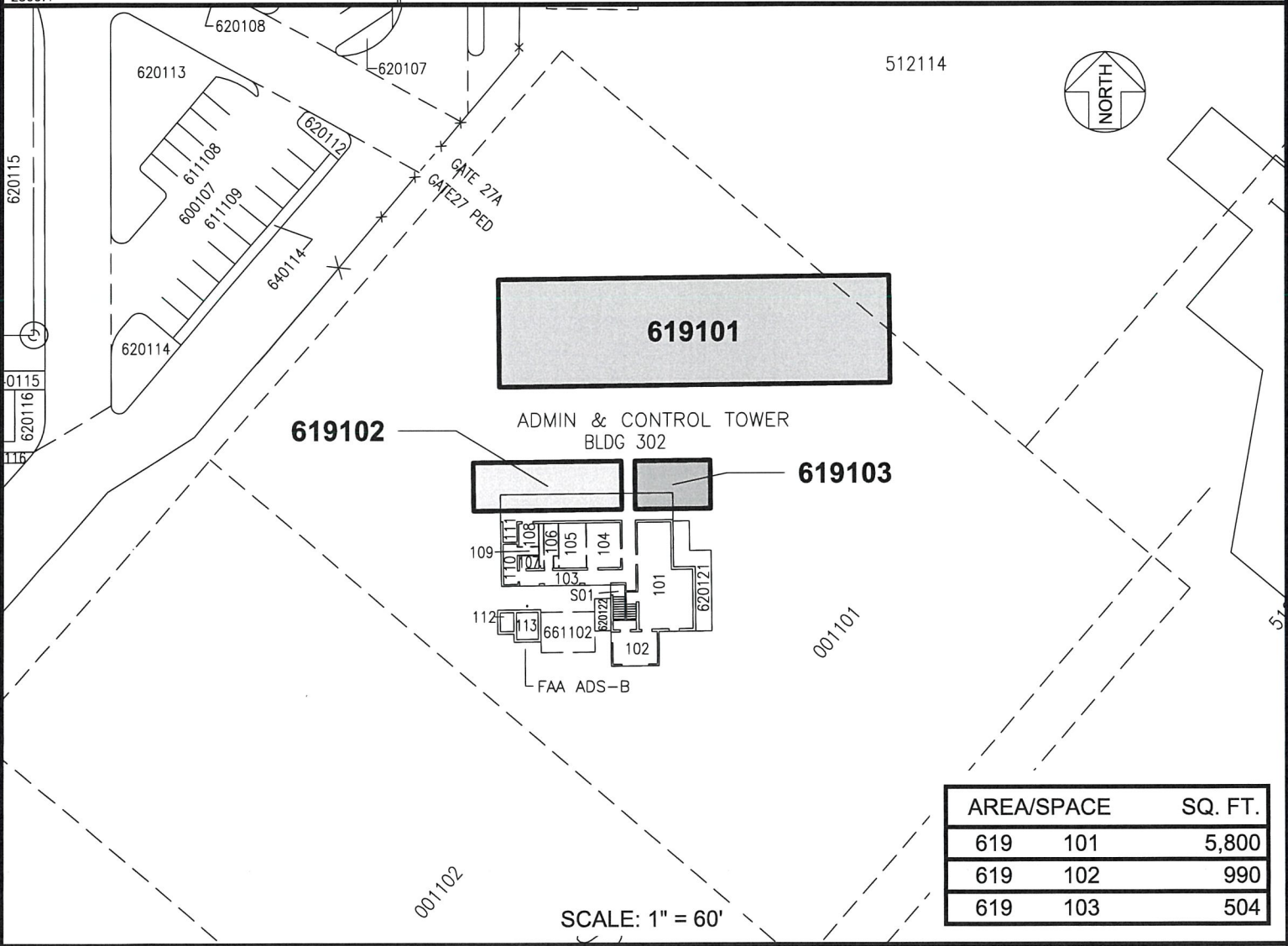
APPROVED FOR SUBMITTAL:



DAWN N. S. CHANG
Chairperson
Board of Land and Natural Resources



LOCATION PLAN



SCALE: 1" = 60'

AREA/SPACE	SQ. FT.
619 101	5,800
619 102	990
619 103	504

DATE : APRIL 2023

EXHIBIT: **A**



AIR SERVICE HAWAII, INC.
DBA ATLANTIC AVIATION
HILO

FUEL TRUCKS/GSE

619101
619102
619103

HILO INTERNATIONAL AIRPORT

N:\AIRPORTS\NITO_HILO\CAD\PM\NITO_619101-01_DRAFT.DWG