

JOSH GREEN, M.D.
GOVERNOR



STATE OF HAWAII
DEPARTMENT OF TRANSPORTATION
869 PUNCHBOWL STREET
HONOLULU, HAWAII 96813-5097

EDWIN H. SNIFFEN
DIRECTOR

Deputy Directors
FORD N. FUCHIGAMI
DREANALEE K. KALILI
TAMMY L. LEE
ROBIN K. SHISHIDO

IN REPLY REFER TO:

Board of Land and
Natural Resources
State of Hawaii
Honolulu, Hawaii

ISSUANCE OF A REVOCABLE PERMIT FOR THREE AIRCRAFT PARKING
CORPORATE AIR
DANIEL K. INOUE INTERNATIONAL AIRPORT
TAX MAP KEY: (1) 1-1-76: PORTION OF 23

OAHU

REQUEST:

Issuance of a Revocable Permit for Aircraft Parking (Parking Permit) to Corporate Air, for three aircraft tie-down spaces, situated at Daniel K. Inouye International Airport.

APPLICANT:

Corporate Air, whose mailing address is P. O. Box 81050, Billings, Montana 59102.

LEGAL REFERENCE:

Section 171-55, Hawaii Revised Statutes (HRS), as amended.

LOCATION AND TAX MAP KEY:

A portion of Daniel K. Inouye International Airport, identified as South Ramp, identified by Tax Map Key: 1st Division, 1-1-76: portion of 23.

AREA:

Area/Space No. 423-185K, containing an area of approximately 2,406 square feet;
Area/Space No. 423-185L, containing an area of approximately 2,405 square feet;
Area/Space No. 423-185M, containing an area of approximately 2,404 square feet, and
as shown and delineated on the attached map labeled Exhibit "A".

ITEM M-3

BLNR – ISSUANCE OF A REVOCABLE PERMIT FOR THREE AIRCRAFT PARKING,
CORPORATE AIR

Page 2

ZONING:

State Land Use District: Urban
City and County of Honolulu LUO: Industrial (I-2)

LAND TITLE STATUS:

Non-ceded - Section 5(a) lands of the Hawaii Admission Act
DHHL 30% entitlement lands pursuant to Hawaii Admission Act YES ___ NO X

CURRENT USE STATUS:

Land presently encumbered by Governor's Executive Order No. 3201, dated June 8, 1983, setting aside 3,152.177 acres designated as Daniel K. Inouye International Airport under the control and management of the State of Hawaii, Department of Transportation for Airport Purposes.

CHARACTER OF USE:

Three aircraft tie-down spaces to park two aircraft 1986 Cessna CE208, Tail No. N-903FE, and 1986 Cessna CE208, Tail No. N-904FE.

COMMENCEMENT DATE:

To be determined by the Director of Transportation at a later date.

MONTHLY RENTAL:

\$615.00 per month (as determined from the Schedule of Rates and Charges established by appraisal of Airport properties statewide).

SECURITY DEPOSIT:

\$1,845.00, or three times the monthly rental in effect.

CHAPTER 343, HRS - ENVIRONMENTAL ASSESSMENT:

The environmental impacts of the proposed action to the subject land area are covered by the Honolulu International Airport Master Plan Update and Noise Compatibility Program Environmental Assessment (EA), State Project No. AO1011-03. The EA is a joint State and Federal document, dated September 1989 and published in the October 23, 1989, issue of the OEQC Bulletin. Accordingly, relevant mitigation from the EA and Department of Transportation environmental best management practice will address minimal impacts from this action.

BLNR – ISSUANCE OF A REVOCABLE PERMIT FOR THREE AIRCRAFT PARKING,
CORPORATE AIR

Page 3

REMARKS:

In accordance with Section 171-55, HRS, relating to Permits, the Department of Transportation proposes to issue a month-to-month Parking Permit to Corporate Air for three aircraft parking spaces at Daniel K. Inouye International Airport.

RECOMMENDATION:

Based on this submittal, and testimony and facts presented, the Department of Transportation recommends the Board finds that approving the issuance of a month-to-month Parking Permit to Corporate Air, including its conditions and rent, will serve the best interests of the State.

Respectfully submitted,

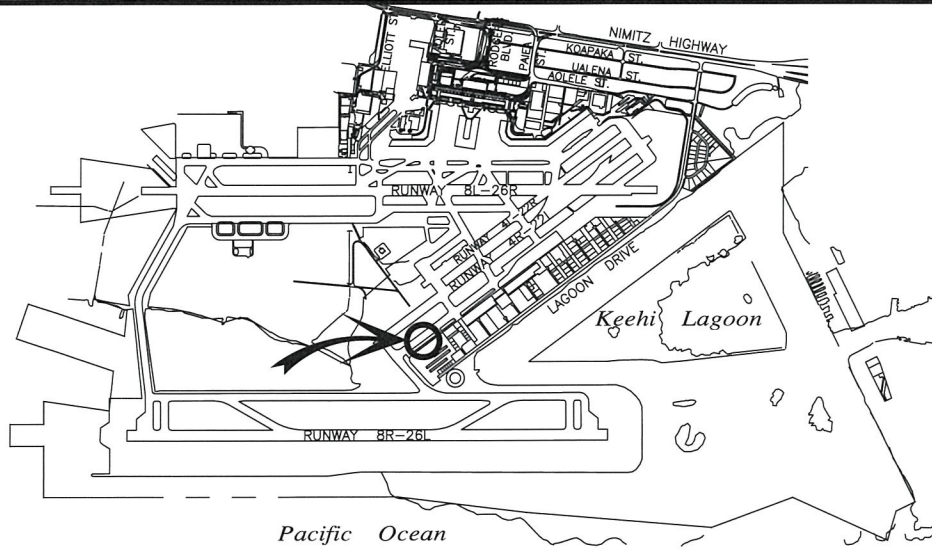


EDWIN H. SNIFFEN
Director of Transportation

APPROVED FOR SUBMITTAL:

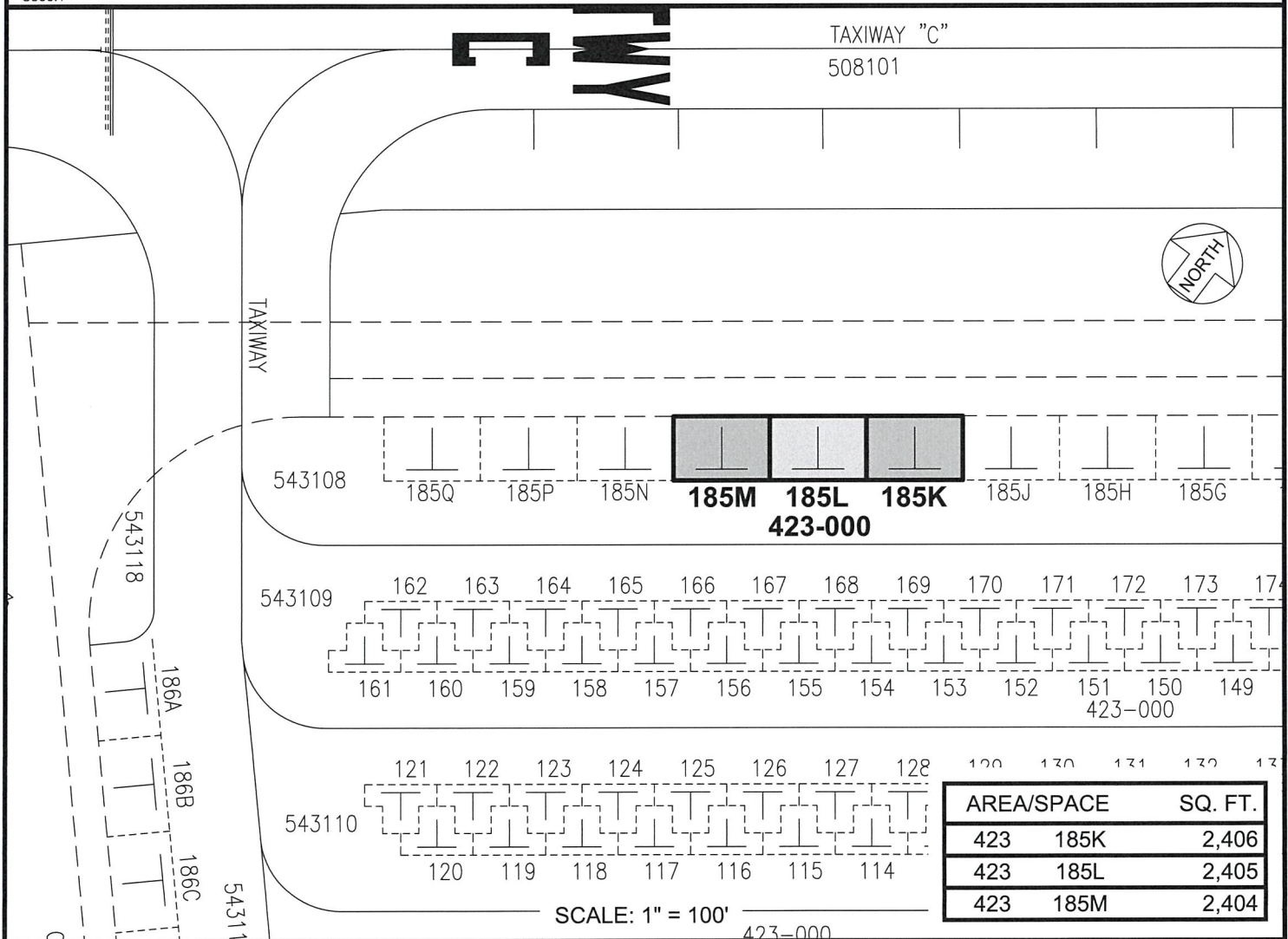


DAWN N. S. CHANG
Chairperson
Board of Land and Natural Resources



LOCATION PLAN

5000:1



AREA/SPACE	SQ. FT.
423 185K	2,406
423 185L	2,405
423 185M	2,404

SCALE: 1" = 100'

PP-23-0009

DATE : JUNE 2023

EXHIBIT: **A**

CORPORATE AIR

TIE-DOWN
GENERAL AVIATION
SOUTH RAMP

423185K
423185L
423185M

DANIEL K. INOUE INTERNATIONAL AIRPORT

N:\AIRPORTS\HNL_HONOLULU\CAD\PM\HNL_423185K-01.DWG