



STATE OF HAWAII
DEPARTMENT OF TRANSPORTATION
869 PUNCHBOWL STREET
HONOLULU, HAWAII 96813-5097

Board of Land and
Natural Resources
State of Hawaii
Honolulu, Hawaii

ISSUANCE OF A REVOCABLE PERMIT FOR WAREHOUSE
STORAGE OF MOVING SUPPLIES AND MATERIALS FOR
ITS MOVING AND TRANSPORTATION OPERATIONS
ROYAL HAWAIIAN MOVERS, INC.
DANIEL K. INOUE INTERNATIONAL AIRPORT
TAX MAP KEY: (1) 1-1-004: 088

OAHU

APPLICANT/LESSEE:

Royal Hawaiian Movers, Inc., a Nevada corporation, whose business address is
3017 Ualena Street, Honolulu, Hawaii 96819.

LEGAL REFERENCE:

Section 171-55, Hawaii Revised Statutes (HRS).

LOCATION AND TAX MAP KEY:

2825 Ualena Street, portion of Daniel K. Inouye International Airport (Airport), Island of
Oahu, State of Hawaii, identified by Tax Map Key: 1st Division, 1-1-004: 088.

AREA:

Bldg/Room No. 149-101, containing an area of approximately 10,599 square feet;
Bldg/Room No. 149-102, containing an area of approximately 5,293 square feet;
Area/Space No. 005-128C, containing an area of approximately 9,243 square feet; and
Area/Space No. 005-128D, containing an area of approximately 184 square feet, as
shown and delineated on the attached map labeled Exhibit "A".

ZONING:

State Land Use District: Urban
City and County of Honolulu: I-2 (Industrial)

ITEM M-5

BLNR – ISSUANCE OF A REVOCABLE PERMIT FOR WAREHOUSE STORAGE OF MOVING SUPPLIES AND MATERIALS FOR ITS MOVING AND TRANSPORTATION OPERATIONS, ROYAL HAWAIIAN MOVERS, INC.

Page 2

LAND TITLE STATUS:

Non-ceded – Direct purchase from private landowner.

DHHL 30% entitlement lands pursuant to the Hawaii State Constitution: YES ___ NO X

CURRENT USE STATUS:

Land presently encumbered by Governor’s Executive Order No. 3894, setting aside a portion of the Airport under the control and management of the State of Hawaii, Department of Transportation (HDOT), for Airport purposes.

The HDOT acquired the subject property together with most of the remaining properties (except one) along the ocean (makai) side of Ualena Street, between Lagoon Drive and Paiea Street, in the mid 1990’s from Loyalty Enterprises, Ltd.

CHARACTER OF USE:

Royal Hawaiian Movers, Inc. will use the space for warehouse storage of moving supplies and materials for its moving and transportation operations at the Airport.

COMMENCEMENT DATE:

Upon execution of the revocable permit.

MONTHLY RENTAL:

\$16,090.65 (based on a rate of \$12.15 per square foot per annum, as determined from the Schedule of Rates and Charges established by appraisal of Airports property statewide).

SECURITY DEPOSIT:

\$48,271.95, or three times the monthly rent in effect.

DCCA VERIFICATION:

Place of business registration confirmed:	YES <u>X</u>	NO ___
Registered business name confirmed:	YES <u>X</u>	NO ___
Good standing confirmed:	YES <u>X</u>	NO ___

BLNR – ISSUANCE OF A REVOCABLE PERMIT FOR WAREHOUSE STORAGE OF MOVING SUPPLIES AND MATERIALS FOR ITS MOVING AND TRANSPORTATION OPERATIONS, ROYAL HAWAIIAN MOVERS, INC.

Page 3

CHAPTER 343, HRS - ENVIRONMENTAL ASSESSMENT:

The HDOT has determined that the subject land areas are covered by the Honolulu International Airport Ualena Street Industrial Lots Acquisition and Chevron Property Acquisition Environmental Assessment (EA) dated October 1990. The EA is published by the Office of Environmental Quality Control (OEQC) in the November 8, 1990, issue of the Environmental Notice. Accordingly, the actions have been determined to have little or no impact upon the environment.

REMARKS:

In accordance with Section 171-55, HRS, relating to Permits, the HDOT proposes to issue a month-to-month revocable permit to Royal Hawaiian Movers, Inc. for warehouse storage of moving supplies and materials for its moving and transportation operations at the Airport.

This portion of Ualena Street is within the runway protection zone, which is limited to uses that do not authorize the congregation of people. Royal Hawaiian Movers, Inc. is aware of the limitations of the property and will use the property for warehouse storage only.

RECOMMENDATION:

Based on this submittal, and testimony and facts presented, the HDOT recommends the Board finds that approving the issuance of a month-to-month Revocable Permit to Royal Hawaiian Movers, Inc., including its conditions and rent, will serve the best interests of the State.

Respectfully submitted,

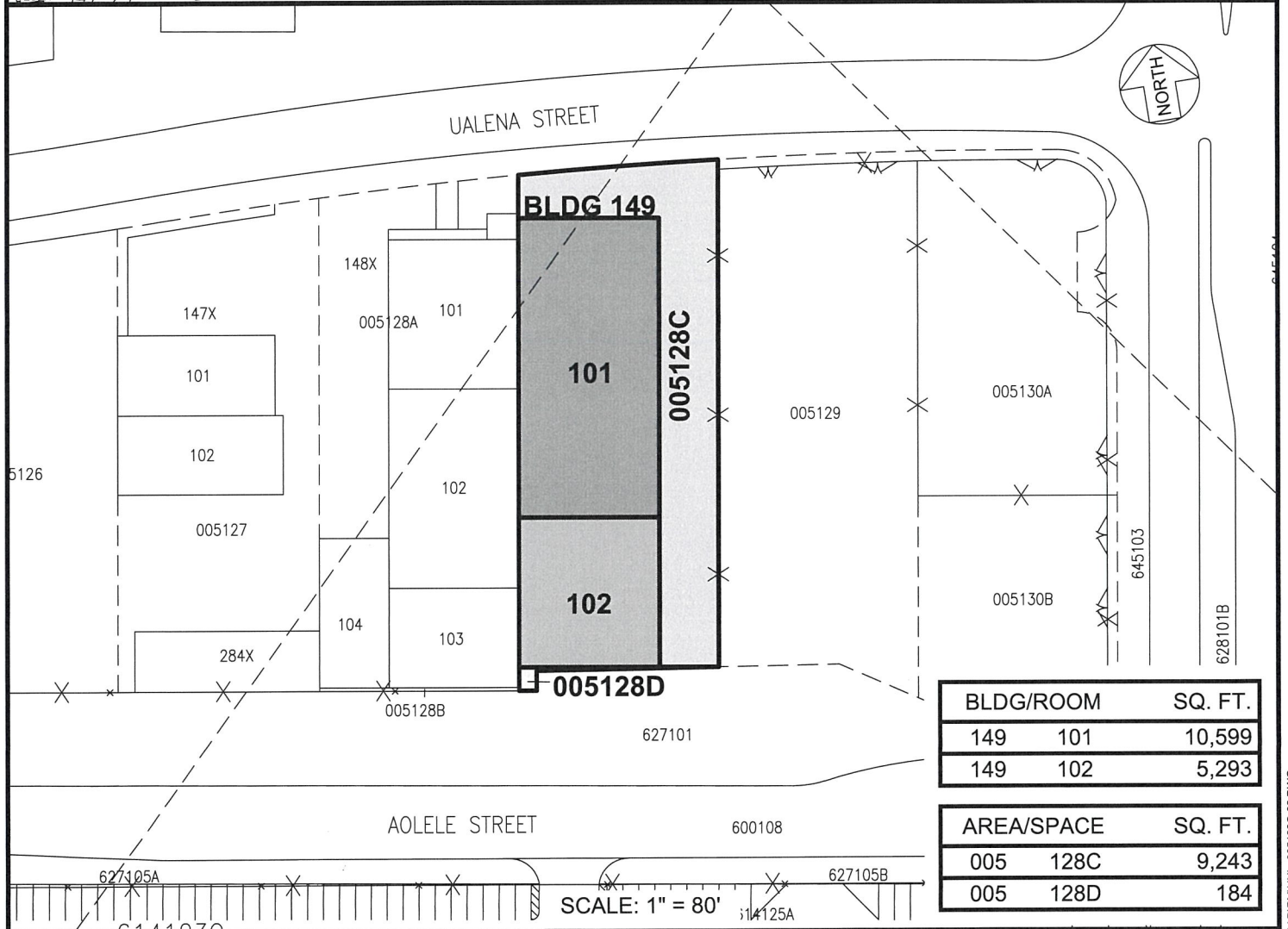
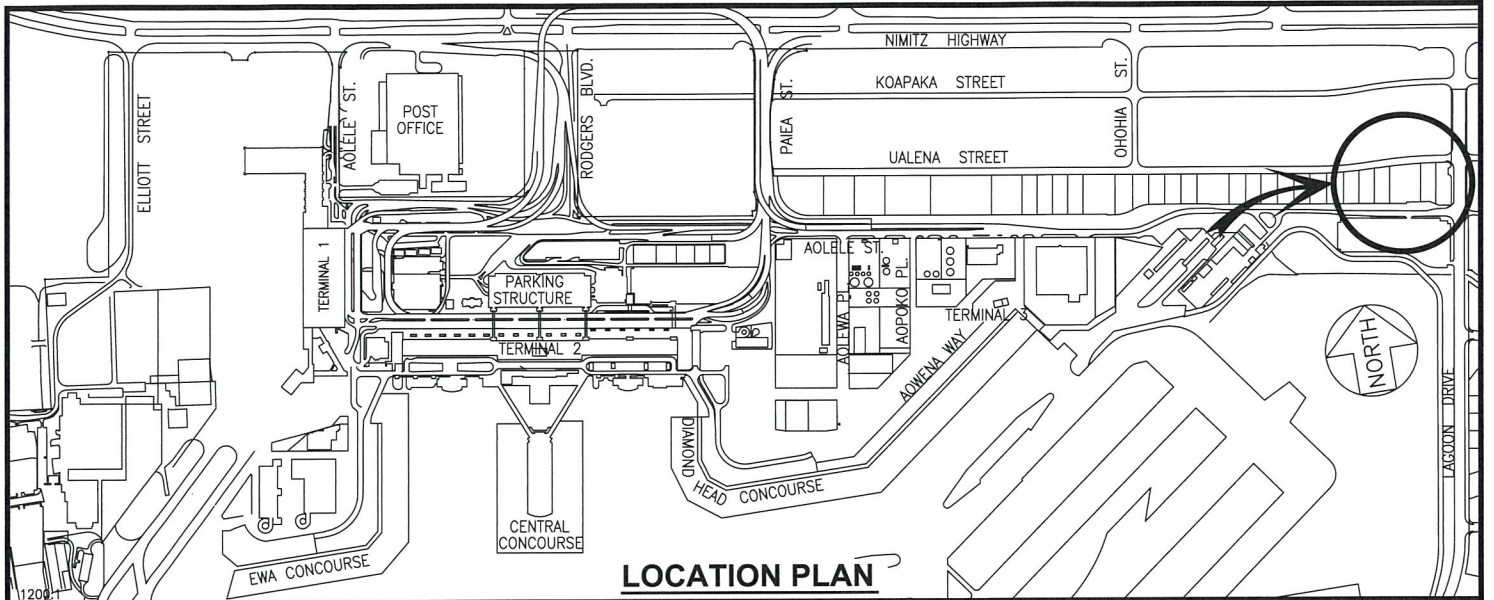


EDWIN H. SNIFFEN
Director of Transportation

APPROVED FOR SUBMITTAL:



DAWN N. S. CHANG
Chairperson
Board of Land and Natural Resources



BLDG/ROOM	SQ. FT.
149 101	10,599
149 102	5,293

AREA/SPACE	SQ. FT.
005 128C	9,243
005 128D	184

DATE : JULY 2023

EXHIBIT: **A**



ROYAL HAWAIIAN
MOVERS INC.

BUILDING 149 & OUTSIDE
PASSENGER TERMINAL
COMPLEX

005128C,D
149101,102

DANIEL K. INOUE INTERNATIONAL AIRPORT

N:\AIRPORTS\IHL_HONOLULU\CAD\PM\IHL_005128C-02.DWG