

JOSH GREEN, M.D.  
GOVERNOR  
KE KIA'ĀINA



EDWIN H. SNIFFEN  
DIRECTOR  
KA LUNA HO'OKELE

Deputy Directors  
Nā Hope Luna Ho'okele  
DREANALEE K. KALILI  
TAMMY L. LEE  
ROBIN K. SHISHIDO

IN REPLY REFER TO:

STATE OF HAWAII | KA MOKU'ĀINA 'O HAWAII  
DEPARTMENT OF TRANSPORTATION | KA 'OIHANA ALAKAU  
869 PUNCHBOWL STREET  
HONOLULU, HAWAII 96813-5097

Board of Land and  
Natural Resources  
State of Hawaii  
Honolulu, Hawaii

ISSUANCE OF A REVOCABLE PERMIT FOR HELICOPTER PARKING  
TO SUPPORT A COMMERCIAL HELICOPTER TOUR OPERATION  
HONOLULU HELICOPTER TOURS INC.  
DANIEL K. INOUE INTERNATIONAL AIRPORT  
TAX MAP KEY: (1) 1-1-003: 001 (PORTION)

OAHU

APPLICANT:

Honolulu Helicopter Tours Inc., whose mailing address is 1889 Halekoa Drive,  
Honolulu, Hawaii 96821.

LEGAL REFERENCE:

Hawaii Revised Statutes (HRS), Section 171-55, as amended.

LOCATION AND TAX MAP KEY:

Portion of the South Ramp, Daniel K. Inouye International Airport (Airport), Island of  
Oahu, State of Hawaii, identified by Tax Map Key: 1<sup>st</sup> Division, 1-1-003: 001 (Portion).

AREA:

Area/Space No. 548-101C, containing an area of approximately 990 square feet,  
as shown and delineated on the attached map labeled Exhibit "A".

ZONING:

State Land Use District: Urban  
City and County of Honolulu LUO: Industrial (I-2)

**ITEM M-4**

BLNR – ISSUANCE OF A REVOCABLE PERMIT FOR HELICOPTER PARKING TO  
SUPPORT A COMMERCIAL HELICOPTER TOUR OPERATION  
HONOLULU HELICOPTER TOURS INC.

Page 2

LAND TITLE STATUS:

Non-Ceded - Section 5(a) lands of the Hawaii Admission Act  
DHHL 30% entitlement lands pursuant to Hawaii Admission Act YES \_\_\_ NO X

CURRENT USE STATUS:

Land presently encumbered by Governor's Executive Order No. 3201, dated  
June 8, 1983, setting aside 3,152.177 acres designated as the Airport under the control  
and management of the State of Hawaii, Department of Transportation (HDOT), for  
Airport Purposes.

CHARACTER OF USE:

Honolulu Helicopter Tours Inc. will use the space for helicopter parking  
(2013 Robinson R-44, Tail No. N-4230H) to support a commercial helicopter tour  
operation at the Airport.

COMMENCEMENT DATE:

Upon complete execution of the revocable permit.

MONTHLY RENTAL:

\$785.40, based upon a rate of \$9.52 per square foot per annum for improved, paved land,  
as determined from the HDOT Schedule of Rates and Charges established by appraisal of  
Airport properties statewide.

SECURITY DEPOSIT:

\$2,356.20, or three times the monthly rental in effect.

DCCA VERIFICATION:

Place of business registration confirmed:	YES <u>X</u>	NO ___
Registered business name confirmed:	YES <u>X</u>	NO ___
Good standing confirmed:	YES <u>X</u>	NO ___

CHAPTER 343, HRS - ENVIRONMENTAL ASSESSMENT:

The environmental impacts of the proposed action to the subject land area are covered by  
the Honolulu International Airport Master Plan Update and Noise Compatibility Program  
Environmental Assessment (EA), State Project No. AO1011-03. The EA is a joint State  
and Federal document, dated September 1989 and published in the October 23, 1989,

BLNR – ISSUANCE OF A REVOCABLE PERMIT FOR HELICOPTER PARKING TO  
SUPPORT A COMMERCIAL HELICOPTER TOUR OPERATION  
HONOLULU HELICOPTER TOURS INC.

Page 3

issue of the OEQC Bulletin. Accordingly, relevant mitigation from the EA and HDOT environmental best management practice will address minimal impacts from this action.

REMARKS:

In accordance with HRS, relating to Permits, the HDOT proposes to issue a month-to-month revocable permit to Honolulu Helicopter Tours Inc. for helicopter parking to support their Commercial Helicopter Tour Operations at the Airport.

RECOMMENDATION:

Based on this submittal, and testimony and facts presented, the HDOT recommends the Board finds that approving the issuance of a month-to-month Revocable Permit to Honolulu Helicopter Tours Inc., including its conditions and rent, will serve the best interests of the State.

Respectfully submitted,

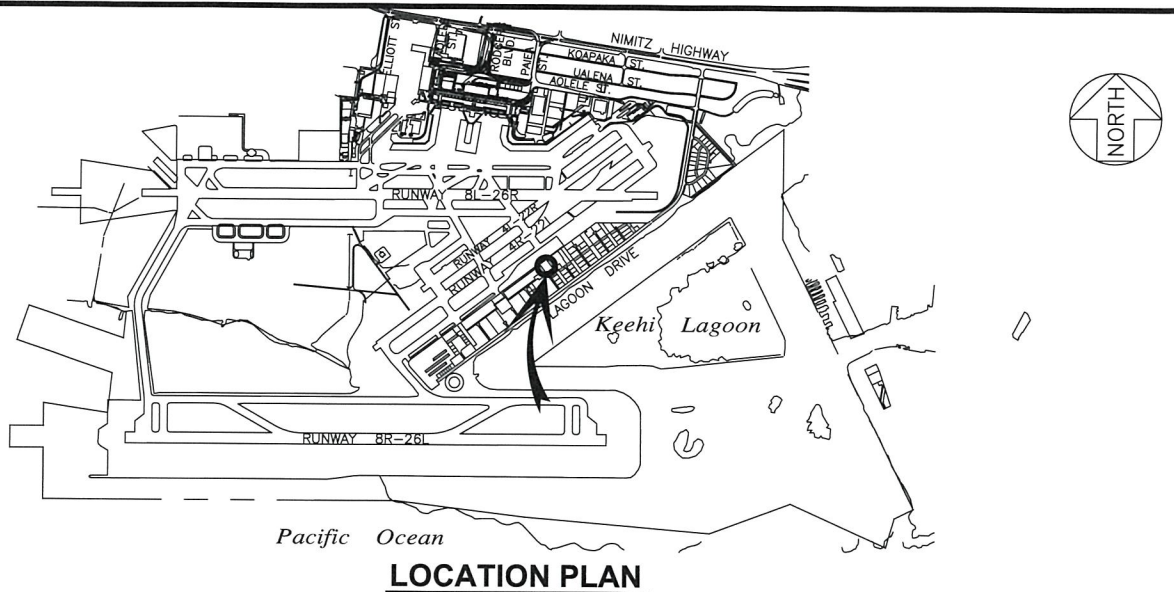


EDWIN H. SNIFFEN  
Director of Transportation

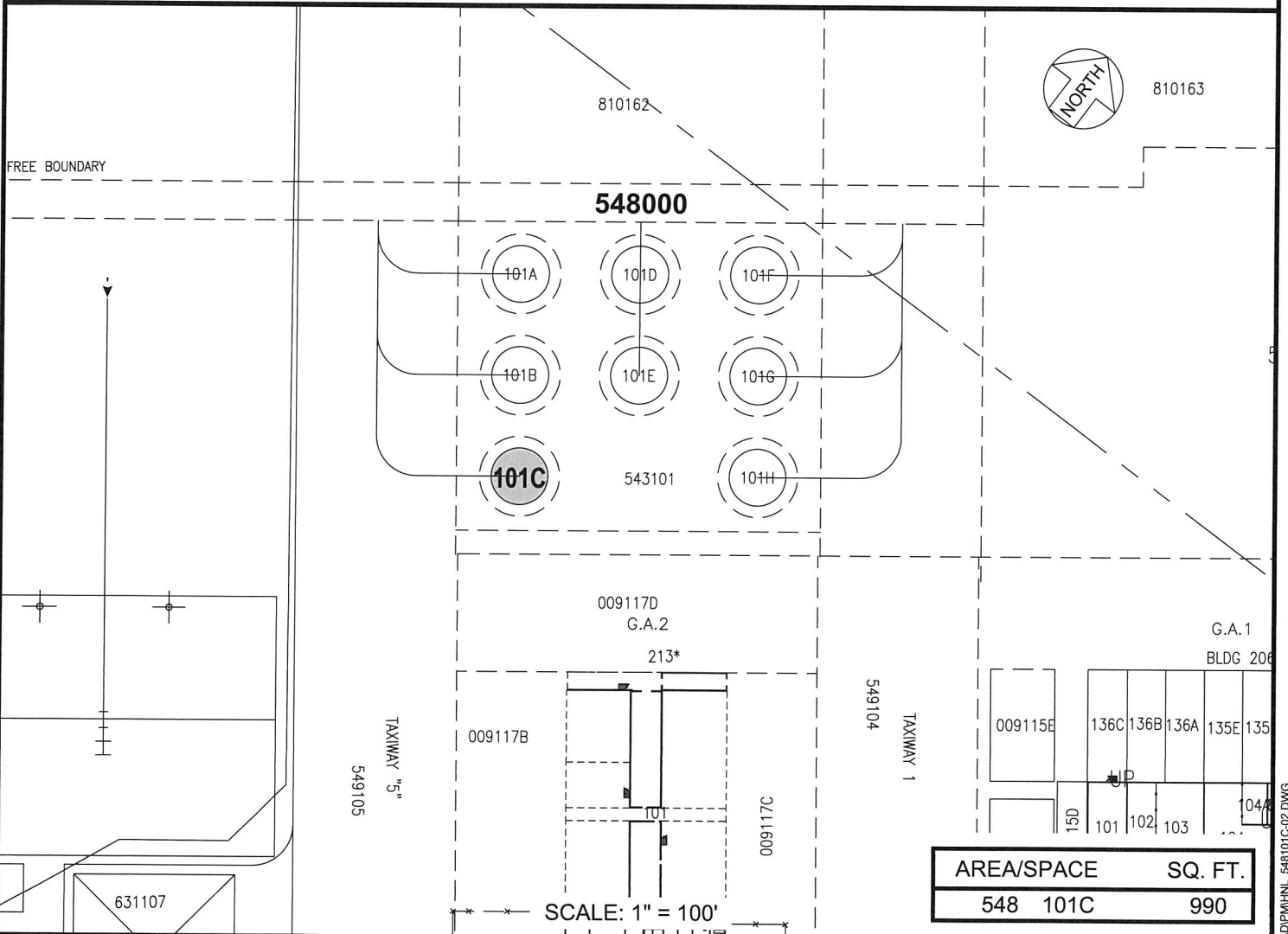
APPROVED FOR SUBMITTAL:



DAWN N. S. CHANG  
Chairperson  
Board of Land and Natural Resources



5000:1



RP-9503

DATE : SEPTEMBER 2023

EXHIBIT: **A**



AIRPORTS

HONOLULU HELICOPTER TOURS INC.

HELICOPTER PARKING SOUTH RAMP

548101C

DANIEL K. INOUE INTERNATIONAL AIRPORT

N:\AIRPORTS\HNL\_HONOLULUCAD\PM\HNL\_548101C-02.DWG