



STATE OF HAWAII | KA MOKU'ĀINA 'O HAWAII'
DEPARTMENT OF TRANSPORTATION | KA 'OIHANA ALAKAU
869 PUNCHBOWL STREET
HONOLULU, HAWAII 96813-5097

Board of Land and
Natural Resources
State of Hawaii
Honolulu, Hawaii

ISSUANCE OF A REVOCABLE PERMIT FOR A T-HANGAR FOR THE
STORAGE AND MAINTENANCE OF AIRCRAFT IN SUPPORT OF A
COMMERCIAL AIRCRAFT MAINTENANCE BUSINESS
PMX AVIATION SERVICES LLC
DANIEL K. INOUYE INTERNATIONAL AIRPORT
TAX MAP KEY: (1) 1-1-076: PORTION OF 20

OAHU

APPLICANT:

PMX Aviation Services LLC, whose mailing address is 73-1029 Ahulani Street,
Kailua-Kona, Hawaii 96740.

LEGAL REFERENCE:

Hawaii Revised Statutes (HRS), Section 171-55, as amended.

LOCATION AND TAX MAP KEY:

A portion of Daniel K. Inouye International Airport (Airport), identified as South Ramp,
Island of Oahu, State of Hawaii, identified by Tax Map Key: 1st Division, 1-1-076:
Portion of 20.

AREA:

Building/Room No. 420-115, containing an area of approximately 1,247 square feet,
as shown and delineated on the attached map labeled Exhibit A.

ZONING:

State Land Use District: Urban
City and County of Honolulu LUO: Industrial (I-2)

BLNR – ISSUANCE OF A REVOCABLE PERMIT FOR A T-HANGAR FOR THE STORAGE AND MAINTENANCE OF AIRCRAFT IN SUPPORT OF A COMMERCIAL AIRCRAFT MAINTENANCE BUSINESS, PMX AVIATION SERVICES LLC
PAGE 2

LAND TITLE STATUS:

Non-ceded - Section 5(a) lands of the Hawaii Admission Act
DHHL 30% entitlement lands pursuant to Hawaii Admission Act YES ___ NO X

CURRENT USE STATUS:

Land presently encumbered by Governor’s Executive Order No. 3201, dated June 8, 1983, setting aside 3,152.177 acres designated as the Airport under the control and management of the State of Hawaii, Department of Transportation (HDOT), for Airport Purposes.

CHARACTER OF USE:

PMX Aviation Services LLC will use the T-Hangar for storage of aircraft (1976 Cessna, U206F, Tail No. N749RV) and as a maintenance hangar to support its commercial aircraft maintenance business at the Airport.

COMMENCEMENT DATE:

To be determined by the Director of Transportation at a later date.

MONTHLY RENTAL:

\$1,576.34 (\$1,521.34, as determined from the HDOT Schedule of Rates and Charges, commercial rate for T-hangar, established by appraisal of Airports properties statewide plus \$55.00 for electricity).

SECURITY DEPOSIT:

\$4,729.02, or three times the monthly rental in effect

DCCA VERIFICATION:

Place of business registration confirmed:	YES <u>X</u>	NO ___
Registered business name confirmed:	YES <u>X</u>	NO ___
Good standing confirmed:	YES <u>X</u>	NO ___

BLNR – ISSUANCE OF A REVOCABLE PERMIT FOR A T-HANGAR FOR THE
STORAGE AND MAINTENANCE OF AIRCRAFT IN SUPPORT OF A COMMERCIAL
AIRCRAFT MAINTENANCE BUSINESS, PMX AVIATION SERVICES LLC
PAGE 3

CHAPTER 343, HRS - ENVIRONMENTAL ASSESSMENT:

The environmental impacts of the proposed action to the subject land area are covered by the Honolulu International Airport Master Plan Update and Noise Compatibility Program Environmental Assessment (EA), State Project No. AO1011-03. The EA is a joint State and Federal document, dated September 1989 and published in the October 23, 1989 issue of the OEQC Bulletin. Accordingly, relevant mitigation from the EA and HDOT environmental best management practice will address minimal impacts from this action.

REMARKS:

In accordance with HRS, relating to Permits, the HDOT proposes to issue a month-to-month revocable permit to PMX Aviation Services LLC for use of a T-Hangar for storage of aircraft and as a maintenance hangar to support its commercial aircraft maintenance business at the Airport.

RECOMMENDATION:

Based on this submittal, and testimony and facts presented, the HDOT recommends the Board finds that approving the issuance of a month-to-month Revocable Permit to PMX Aviation Services LLC, including its conditions and rent, will serve the best interests of the State.

Respectfully submitted,

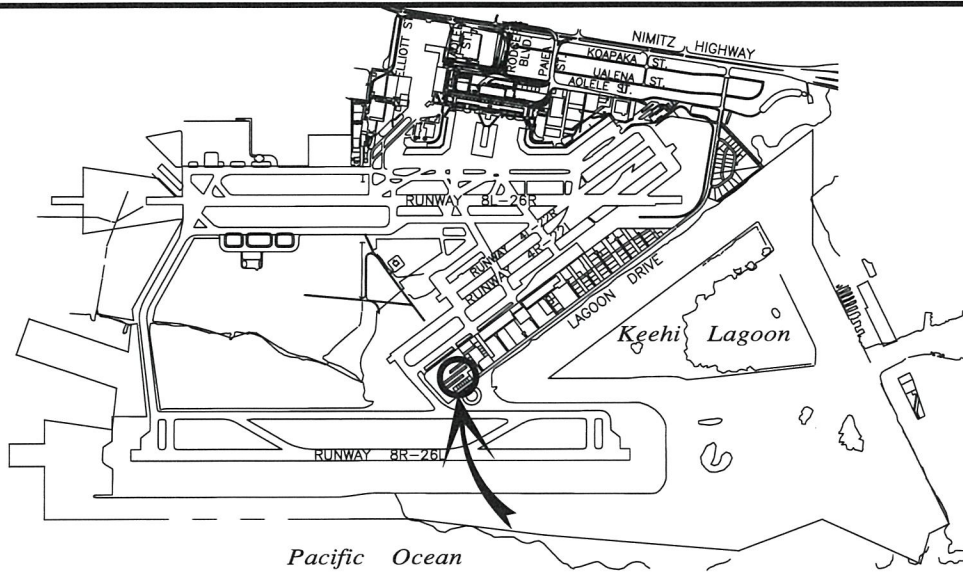


EDWIN H. SNIFFEN
Director of Transportation

APPROVED FOR SUBMITTAL:

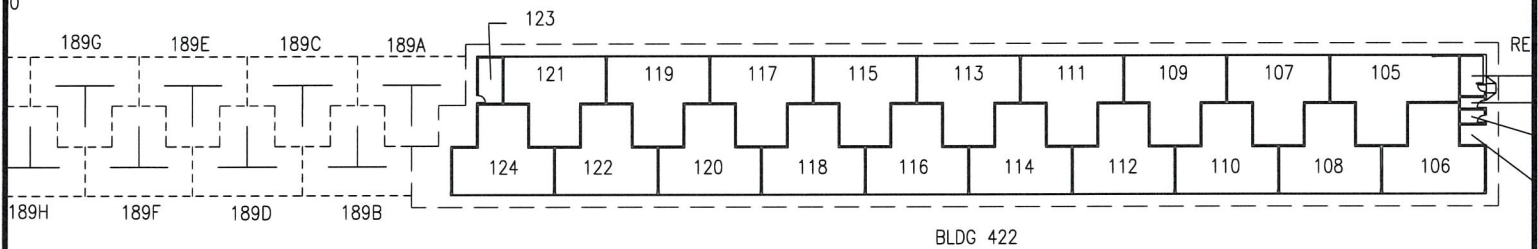


DAWN N. S. CHANG
Chairperson
Board of Land and Natural Resources

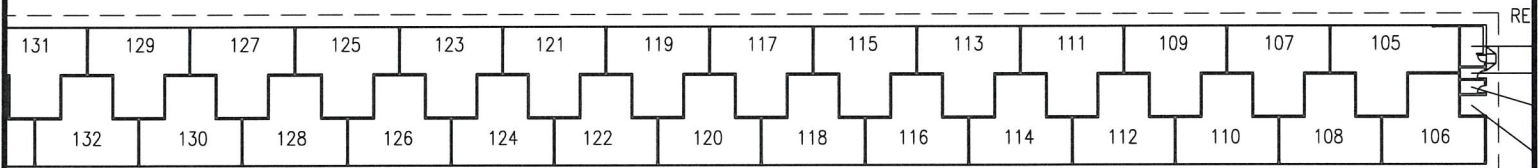


LOCATION PLAN

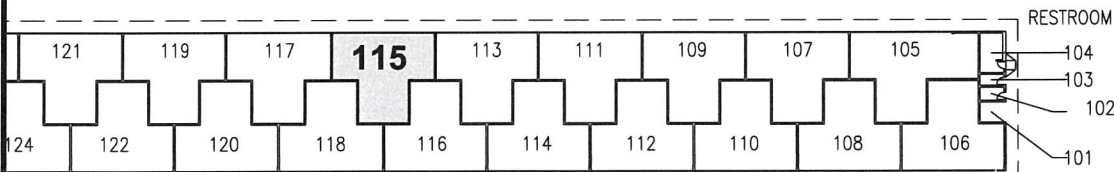
5000:1



BLDG 422



BLDG 421



BLDG 420



011101C 543114

SCALE: 1" = 80'

BLDG/ROOM	SQ. FT.
420 115	1,247

RP-9534

DATE : JANUARY 2024

EXHIBIT: **A**



AIRPORTS

PMX AVIATION SERVICES LLC

T-HANGAR

420115

DANIEL K. INOUE INTERNATIONAL AIRPORT

N:\AIRPORTS\HNL_HONOLULUCAD\PM\HNL_420115-01.DWG