



STATE OF HAWAI'I | KA MOKU'ĀINA 'O HAWAI'I
DEPARTMENT OF TRANSPORTATION | KA 'OIHANA ALAKAU
869 PUNCHBOWL STREET
HONOLULU, HAWAI'I 96813-5097

Board of Land and
Natural Resources
State of Hawaii
Honolulu, Hawaii

ISSUANCE OF A REVOCABLE PERMIT FOR STORAGE AND
PARKING OF SHIPPING CONTAINERS AND VEHICLES
HAWAII ISLE TRANSPORTATION SERVICES, INC., DBA KONA TRANS
HILO INTERNATIONAL AIRPORT
TAX MAP KEY: (3) 2-1-012: PORTION OF 009

HAWAII

LEGAL REFERENCE:

Section 171-55, Hawaii Revised Statutes (HRS), as amended.

APPLICANT:

Hawaii Isle Transportation Services, Inc., dba Kona Trans (Kona Trans), whose business address is 74-5039A Queen Kaahumanu Highway, Kailua-Kona, Hawaii 96740.

LOCATION AND TAX MAP KEY:

Portion of Hilo International Airport (ITO), Hilo, Island of Hawaii, identified by Tax Map Key: 3rd Division, 2-1-012: Portion of 009.

AREA:

Area/Space No. 003-103, containing an area of approximately 85,500 square feet of improved, unpaved land, as shown, and delineated on the attached Exhibit A.

ZONING:

State Land Use District: Urban
County of Hawaii: Industrial (ML-20)

BLNR – ISSUANCE OF A REVOCABLE PERMIT FOR STORAGE AND PARKING
OF SHIPPING CONTAINERS AND VEHICLES
HAWAII ISLE TRANSPORTATION SERVICES, INC., DBA KONA TRANS
Page 2

LAND TITLE STATUS:

Section 5(a) lands of the Hawaii Admission Act: Ceded
DHHL 30% entitlement lands pursuant to Hawaii Admission Act YES ___ NO X

CURRENT USE STATUS:

Land presently encumbered by Governor's Executive Order No. 1519, dated July 17, 1952, setting aside 550.881 acres being a portion of General Lyman Field under the control and management of the Hawaii Aeronautics Commission [subsequently transferred to the Department of Transportation (HDOT)] as a site for the Hilo Airport, now known as Hilo International Airport.

CHARACTER OF USE:

Kona Trans will use the space for the storage and parking of shipping containers and vehicles to support its trucking and shipping operation.

COMMENCEMENT DATE:

To be determined by the Director of Transportation at a later date.

MONTHLY RENTAL:

\$6,697.50 (based on a rate of \$0.94 per square foot, per annum for improved, unpaved, land Hawaii as determined from the HDOT schedule of rates and charges established by appraisal of Airports property statewide).

SECURITY DEPOSIT:

\$20,092.50, or three times the monthly rental in effect.

DCCA VERIFICATION:

Place of business registration confirmed:	YES <u>X</u>	NO ___
Registered business name confirmed:	YES <u>X</u>	NO ___
Good standing confirmed:	YES <u>X</u>	NO ___

CHAPTER 343, HRS – ENVIRONMENTAL ASSESSMENT:

The HDOT has determined that the subject land areas are covered by the Hilo International Airport Final Environmental Assessment (FEA), dated April 15, 2003, and published by the Office of Environmental Quality Control in the May 8, 2003, issue of The Environmental Notice. Accordingly, all relevant mitigation from the FEA and best

BLNR – ISSUANCE OF A REVOCABLE PERMIT FOR STORAGE AND PARKING
OF SHIPPING CONTAINERS AND VEHICLES
HAWAII ISLE TRANSPORTATION SERVICES, INC., DBA KONA TRANS
Page 3

management practices will be implemented to address the minimum impacts of this action.

REMARKS:

In accordance with Section 171-55, HRS, relating to Permits, the Department of Transportation (HDOT) proposes to issue a month-to-month Revocable Permit to Kona Trans for storage and parking of shipping containers and vehicles to support its trucking and shipping operation.

RECOMMENDATION:

Based on this submittal, and testimony and facts presented, the HDOT recommends the Board finds that approving the issuance of a month-to-month Revocable Permit to Kona Trans, including its conditions and rent, will serve the best interests of the State.

Respectfully submitted,

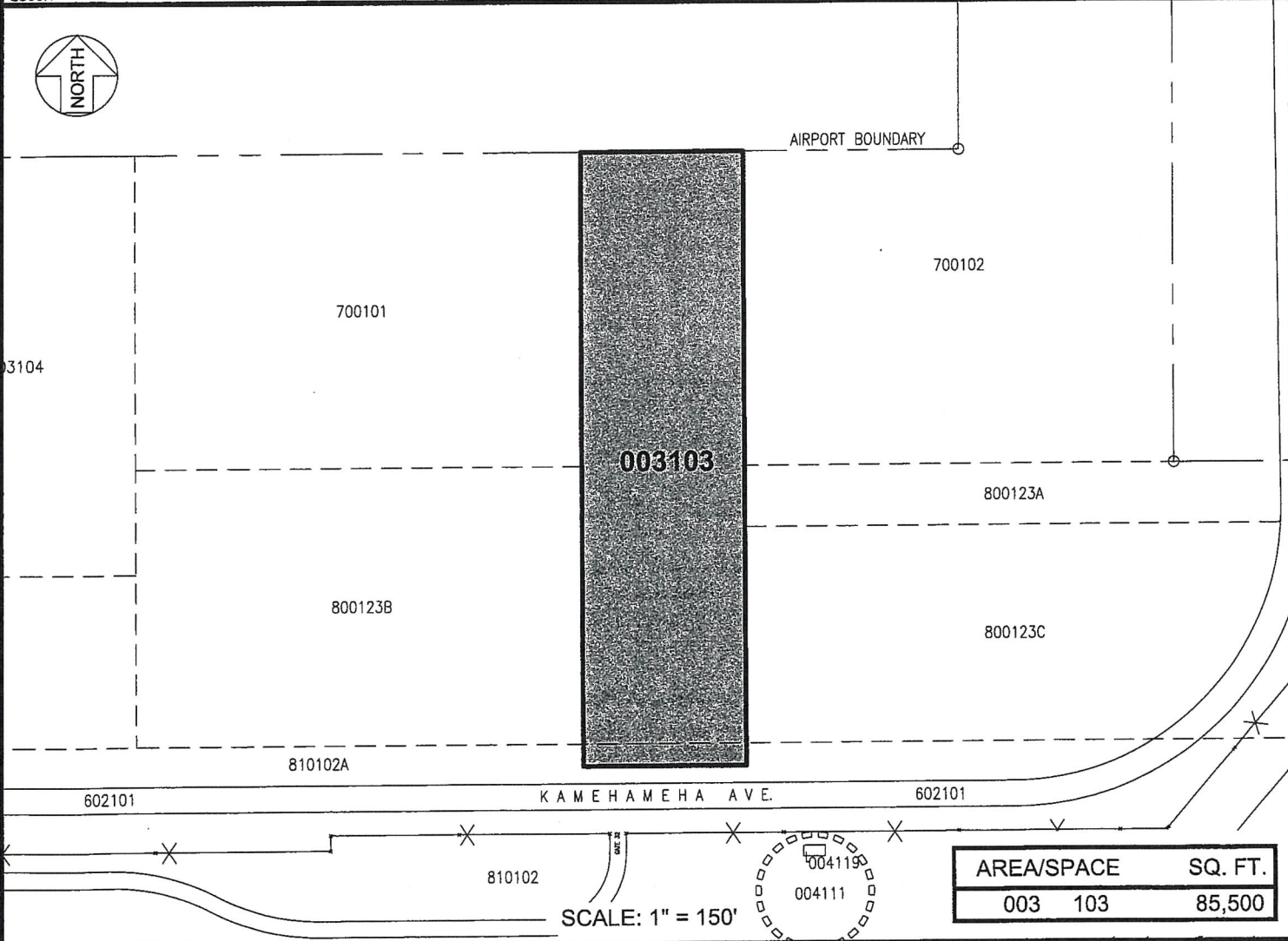
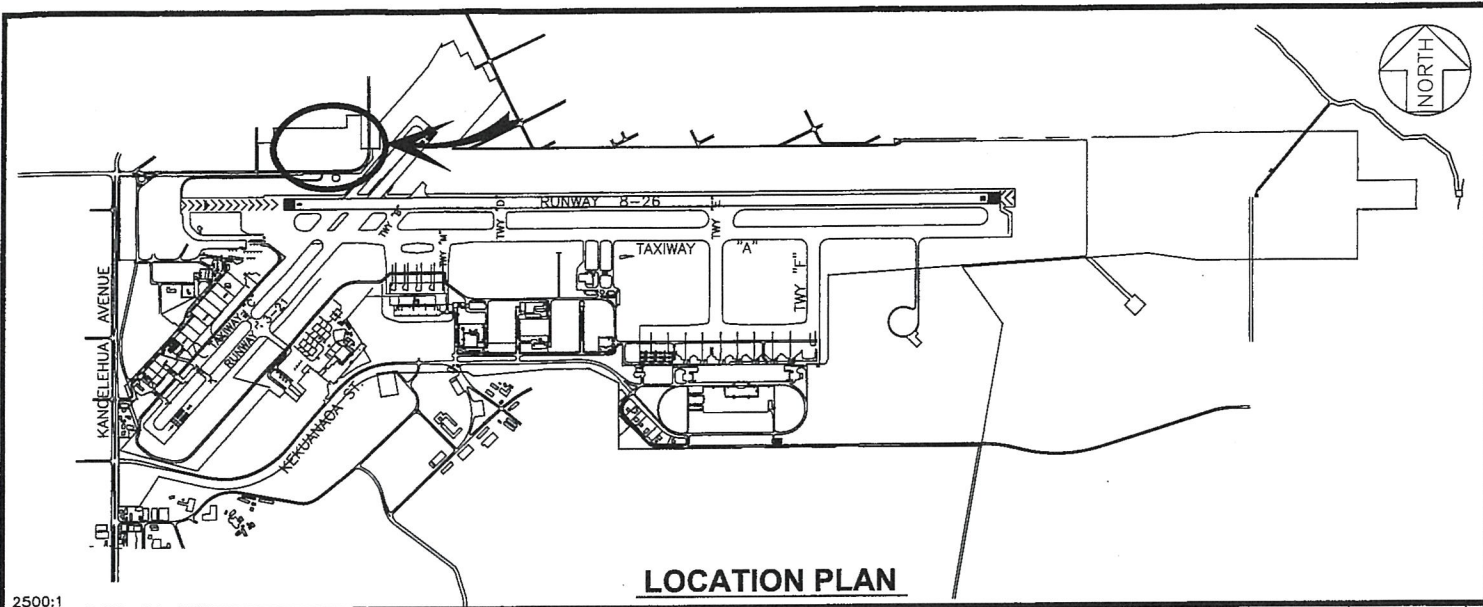


EDWIN H. SNIFFEN
Director of Transportation

APPROVED FOR SUBMITTAL:



DAWN N. S. CHANG
Chairperson
Board of Land and Natural Resources



DATE : OCTOBER 2023

EXHIBIT: **A**

<p>AIRPORTS</p>	<p>HAWAII ISLE TRANSPORTATION SERVICES INC.</p>	<p>LOT</p>	<p>003103</p>
------------------------	--	-------------------	----------------------

HILO INTERNATIONAL AIRPORT

N:\AIRPORTS\HITO_HILO\CADD\PM\TO_003103-01.DWG