



**STATE OF HAWAI'I | KA MOKU'ĀINA 'O HAWAI'I**  
**DEPARTMENT OF TRANSPORTATION | KA 'OIHANA ALAKAU**  
869 PUNCHBOWL STREET  
HONOLULU, HAWAII 96813-5097

April 26, 2024

Board of Land and  
Natural Resources  
State of Hawaii  
Honolulu, Hawaii

ISSUANCE OF A REVOCABLE PERMIT FOR IMPROVED,  
PAVED LAND FOR CONTAINER STORAGE AS PART OF  
ITS MOVING AND TRANSPORTATION OPERATIONS  
ROYAL HAWAIIAN MOVERS, INC.  
DANIEL K. INOUE INTERNATIONAL AIRPORT  
TAX MAP KEY: (1) 1-1-014: 103 (PORTION) AND (1) 1-1-014: 114

OAHU

APPLICANT/LESSEE:

Royal Hawaiian Movers, Inc., a Nevada corporation, whose business address is  
3017 Ualena Street, Honolulu, Hawaii 96819.

LEGAL REFERENCE:

Hawaii Revised Statutes (HRS), Section 171-55, as amended.

LOCATION AND TAX MAP KEY:

3129 Ualena Street, portion of Daniel K. Inouye International Airport (Airport), Island of  
Oahu, State of Hawaii, identified by Tax Map Key: 1<sup>st</sup> Division, 1-1-014: 103 (Portion)  
and 1-1-014: 114.

AREA:

Area/Space No. 005-105A, containing an area of approximately 26,945 square feet of  
improved, paved land; and  
Area/Space No. 005-105B, containing an area of approximately 16,880 square feet of  
improved, paved land, as shown and delineated on the attached map labeled Exhibit "A".

**ITEM M-3**

BLNR – ISSUANCE OF A REVOCABLE PERMIT FOR IMPROVED, PAVED LAND FOR CONTAINER STORAGE AS PART OF ITS MOVING AND TRANSPORTATION OPERATIONS, ROYAL HAWAIIAN MOVERS, INC.

Page 2

ZONING:

State Land Use District: Urban  
City and County of Honolulu: I-2 (Industrial)

LAND TITLE STATUS:

Non-ceded – Direct purchase from private landowner.

DHHL 30% entitlement lands pursuant to the Hawaii State Constitution: YES \_\_\_ NO X

CURRENT USE STATUS:

Land presently encumbered by Governor’s Executive Order No. 3894, setting aside a portion of the Airport under the control and management of the State of Hawaii, Department of Transportation (HDOT), for Airport purposes.

The HDOT acquired the subject property together with most of the remaining properties (except one) along the ocean (makai) side of Ualena Street, between Lagoon Drive and Paiea Street, in the mid 1990’s from Loyalty Enterprises, Ltd.

CHARACTER OF USE:

Royal Hawaiian Movers, Inc. will use the improved, paved land for container storage as part of its moving and transportation operations at the Airport.

COMMENCEMENT DATE:

Upon execution of the revocable permit.

MONTHLY RENTAL:

\$34,767.84, as determined from the Schedule of Rates and Charges established by appraisal of Airports property statewide.

SECURITY DEPOSIT:

\$104,303.52, or three times the monthly rent in effect.

DCCA VERIFICATION:

Place of business registration confirmed:	YES <u>X</u>	NO ___
Registered business name confirmed:	YES <u>X</u>	NO ___
Good standing confirmed:	YES <u>X</u>	NO ___

BLNR – ISSUANCE OF A REVOCABLE PERMIT FOR IMPROVED, PAVED LAND FOR CONTAINER STORAGE AS PART OF ITS MOVING AND TRANSPORTATION OPERATIONS, ROYAL HAWAIIAN MOVERS, INC.

Page 3

CHAPTER 343, HRS - ENVIRONMENTAL ASSESSMENT:

The HDOT has determined that the subject land areas are covered by the Honolulu International Airport Ualena Street Industrial Lots Acquisition and Chevron Property Acquisition Environmental Assessment (EA) dated October 1990. The EA is published by the Office of Environmental Quality Control (OEQC) in the November 8, 1990, issue of the Environmental Notice. Accordingly, the actions have been determined to have little or no impact upon the environment.

REMARKS:

In accordance with HRS, relating to Permits, the HDOT proposes to issue a month-to-month revocable permit to Royal Hawaiian Movers, Inc. for improved, paved land for container storage as part of its moving and transportation operations at the Airport.

RECOMMENDATION:

Based on this submittal, and testimony and facts presented, the HDOT recommends the Board finds that approving the issuance of a month-to-month Revocable Permit to Royal Hawaiian Movers, Inc., including its conditions and rent, will serve the best interests of the State.

Respectfully submitted,



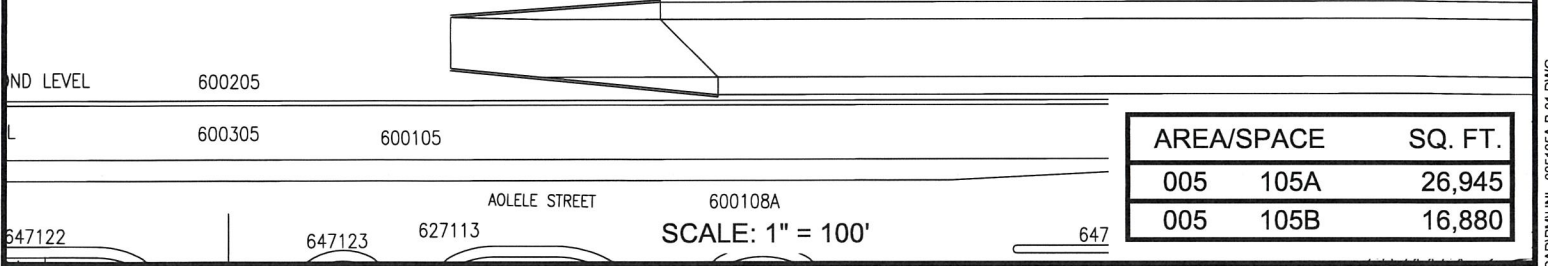
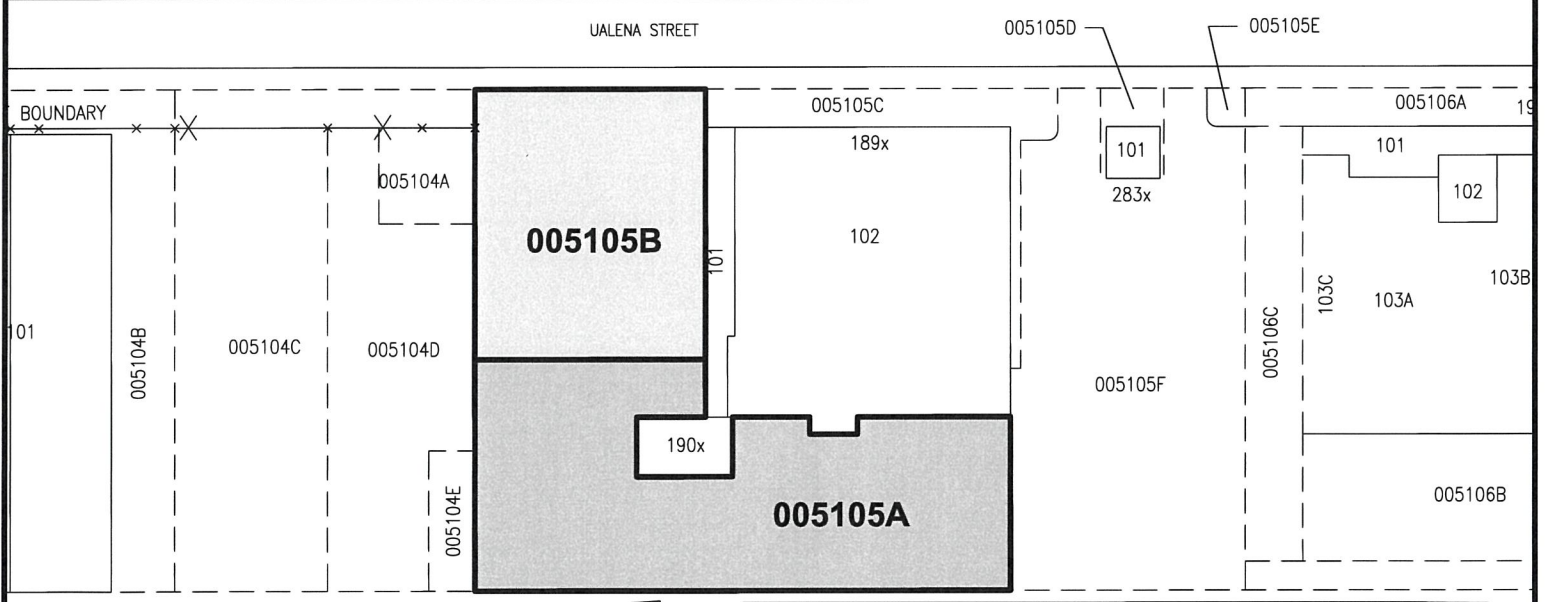
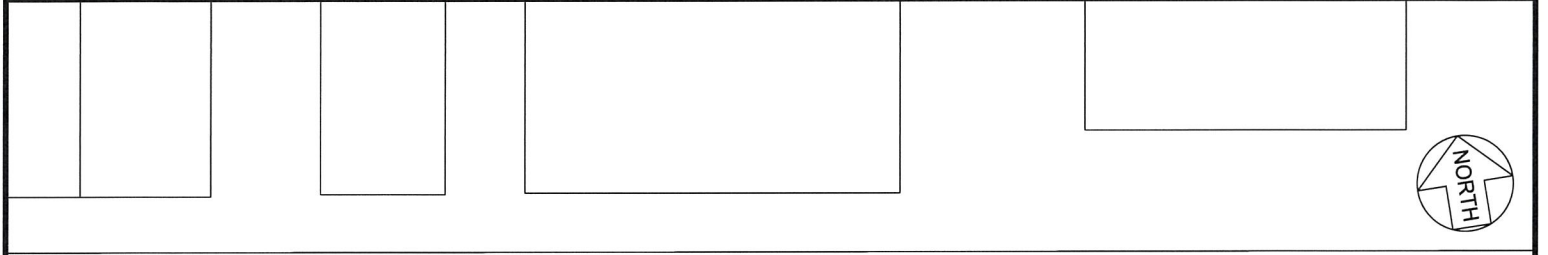
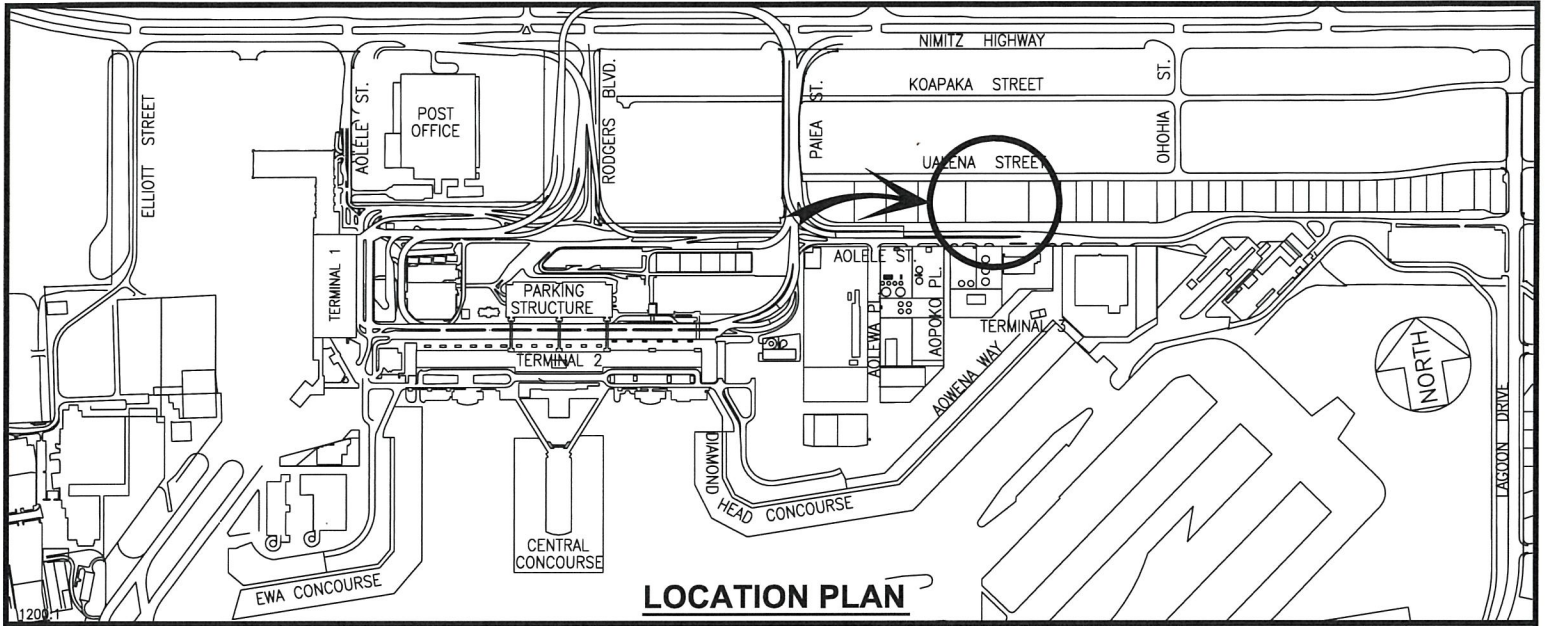
EDWIN H. SNIFFEN  
Director of Transportation

APPROVED FOR SUBMITTAL:



DAWN N. S. CHANG  
Chairperson  
Board of Land and Natural Resources

Attachment



AREA/SPACE	SQ. FT.
005 105A	26,945
005 105B	16,880

SCALE: 1" = 100'

RP-9557      DATE : MARCH 2024      EXHIBIT: **A**



ROYAL HAWAIIAN  
MOVERS, LLC

LOTS

005105A-B

DANIEL K. INOUE INTERNATIONAL AIRPORT

N:\AIRPORTS\HNL\_HONOLULU\CADD\IPM\HNL\_005105A-B-01.DWG