

MKSOA BOARD MEETING

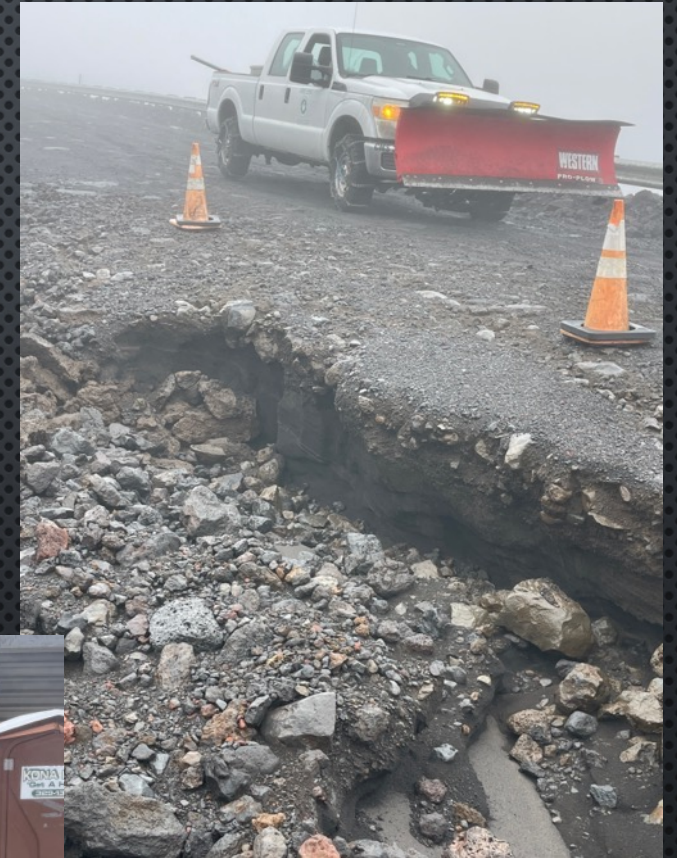
MARCH 13-16 STORM DAMAGE REPORT



KONA LOW STORM MARCH 13-16

STORM DAMAGE:

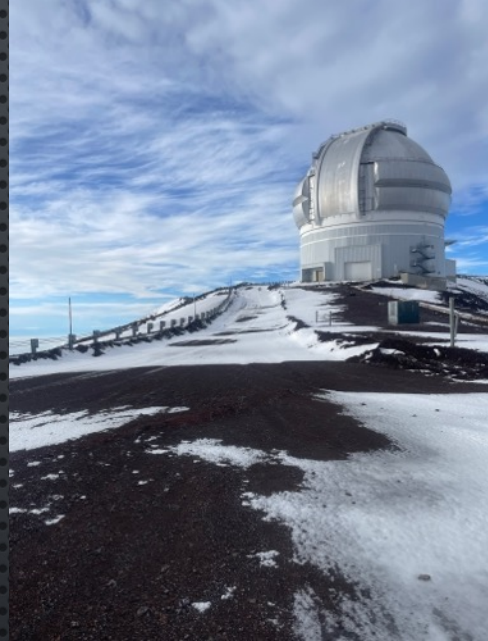
- 20.24" FROM 3/13 THROUGH 3/16. PEAK WIND SPEED 118MPH 3/14/26
- DAMAGE TO GRAVEL ROAD, CINDER SUMMIT ROAD, CFHT ACCESS, AND SOME RIDGE AREAS (SUMMIT LUNCH ROOM AREA, KECK, CFHT, IRTF)
- UTILITIES CREW HAS BEEN WORKING SINCE FRIDAY IN PROVIDING ACCESS TO OBSERVATORIES, AND ROAD REPAIRS ONGOING. CURRENTLY 567 MAN HOURS SPENT AND COUNTING,
- 1200 TONS OF MATERIAL ORDERED & DELIVERED
- CURRENT CONDITIONS (DOWNED CRITICAL EQUIPMENT) AND SHORTAGE OF MATERIAL WILL MAKE THE REPAIR A LONG PROCESS.



KONA LOW STORM MARCH 13-16



KONA LOW STORM MARCH 13-16: SUMMIT



KONA LOW STORM MARCH 13-16: MATERIAL DELIVERY, 1200 TONS



KONA LOW STORM MARCH 13-16

QUESTIONS?

